



Web: www.anbobio.com
www.dijibio.com
Order: order@dijibio.com
Tel: (86) 519 8805 0026

AKAP1 Antibody [#C11427]

Catalog Number: C11427

Concentration: 1mg/ml

Swiss-Prot No.: Q92667

Other Names: A kinase anchor protein 1, mitochondrial precursor, A-kinase anchor protein 149 kDa, AKAP 149, AKAP149, AKP1, D-AKAP-1, Dual specificity A-kinase anchoring protein 1, PRKA1, Protein kinase A anchoring protein 1, S-AKAP84, Spermatid A-kinase anchor protein 84

Storage/Stability: Store at -20°C/1 year

Form of Antibody: Rabbit IgG in phosphate buffered saline (without Mg²⁺ and Ca²⁺), pH 7.4, 150mM NaCl, 0.02% sodium azide and 50% glycerol.

Immunogen: The antiserum was produced against synthesized peptide derived from internal of human

AKAP1.

Purification: The antibody was affinity-purified from rabbit antiserum by affinity-chromatography using epitope-specific immunogen.

Specificity: AKAP1 antibody detects endogenous levels of total AKAP1 protein.

Reactivity: Human

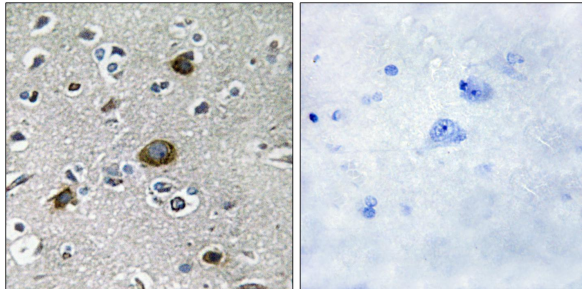
Applications: WB: 1:500~1:3000 IHC: 1:50~1:100
IF: 1:100~1:500 ELISA: 1:1000

References:

Trendelenburg G., Biochem. Biophys. Res. Commun. 225:313-319(1996).

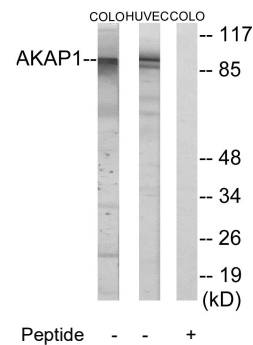
Lin R.-Y., J. Biol. Chem. 270:27804-27811(1995).

Hillman R.T., Genome Biol. 5:RESEARCH008.1-RESEARCH008.16(2004).

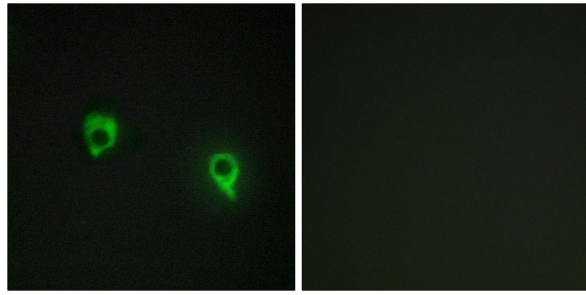


Peptide - +

Immunohistochemistry analysis of paraffin-embedded human brain tissue using AKAP1 antibody.



Western blot analysis of extracts from HUVEC cells and COLO cells, using AKAP1 antibody.



Peptide - +

Immunofluorescence analysis of COS7 cells, using
AKAP1 antibody.