



**Web:** [www.anbobio.com](http://www.anbobio.com)  
[www.dijibio.com](http://www.dijibio.com)  
**Order:** [order@dijibio.com](mailto:order@dijibio.com)  
**Tel:** (86) 519 8805 0026

## TEAD2 Antibody [#C11087]

**Catalog Number:** C11087

**Concentration:** 1mg/ml

**Swiss-Prot No.:** Q15562

**Other Names:** TEA domain family member 2; TEAD-2

**Storage/Stability:** Store at -20°C/1 year

**Form of Antibody:** Rabbit IgG in phosphate buffered saline (without Mg<sup>2+</sup> and Ca<sup>2+</sup>), pH 7.4, 150mM NaCl, 0.02% sodium azide and 50% glycerol.

**Immunogen:** The antiserum was produced against synthesized peptide derived from internal of human TEAD2.

**Purification:** The antibody was affinity-purified from

rabbit antiserum by affinity-chromatography using epitope-specific immunogen.

**Specificity:** TEAD2 antibody detects endogenous levels of total TEAD2 protein.

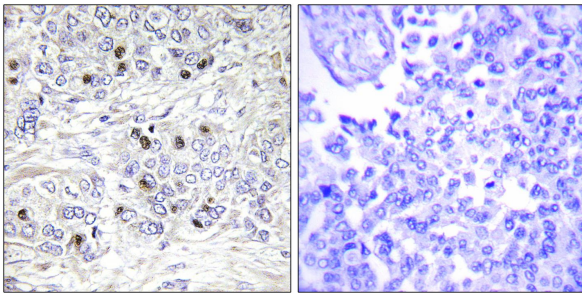
**Reactivity:** Human (Identities = 100%, Positives = 100%);  
Mouse (Identities = 100%, Positives = 100%)

**Applications:** IHC: 1:50~1:100 IF: 1:100~1:500  
ELISA: 1:5000

**References:**

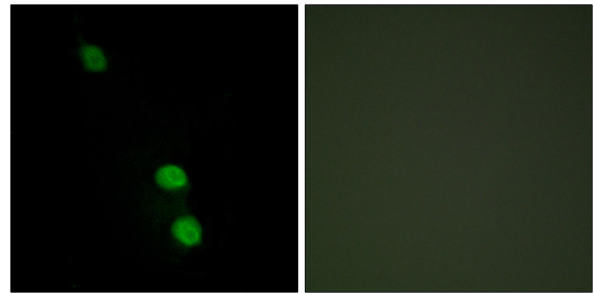
The MGC Project Team, Genome Res. 14:2121-2127(2004).

Jacquemin P., J. Biol. Chem. 271:21775-21785(1996).



Peptide                      -                      +

Immunohistochemistry analysis of paraffin-embedded human breast carcinoma tissue, using TEAD2 antibody.



Peptide                      -                      +

Immunofluorescence analysis of HepG2 cells, using TEAD2 antibody.