



Web: www.anbobio.com
www.dijibio.com
Order: order@dijibio.com
Tel: (86) 519 8805 0026

RhoH Antibody [#C11096]

Catalog Number: C11096

Concentration: 1mg/ml

Swiss-Prot No.: Q15669

Other Names: Rho-related GTP-binding protein RhoH [Precursor], GTP-binding protein TTF, RHOH, ARHH, TTF

Storage/Stability: Store at -20°C/1 year

Form of Antibody: Rabbit IgG in phosphate buffered saline (without Mg²⁺ and Ca²⁺), pH 7.4, 150mM NaCl, 0.02% sodium azide and 50% glycerol.

Immunogen: The antiserum was produced against synthesized peptide derived from internal of human RhoH.

Purification: The antibody was affinity-purified from

rabbit antiserum by affinity-chromatography using epitope-specific immunogen.

Specificity: RhoH antibody detects endogenous levels of total RhoH protein.

Reactivity: Human, Mouse, Rat

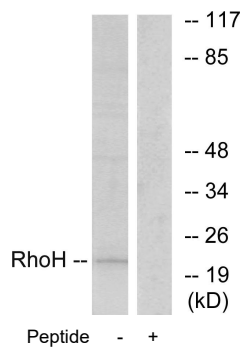
Applications: WB: 1:500~1:3000 IF: 1:100~1:500
ELISA: 1:5000

References:

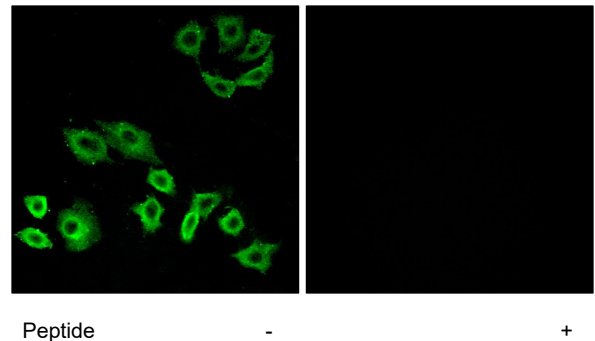
Dallery E., Oncogene 10:2171-2178(1995).

Puhl H.L. III, Submitted (APR-2002) to the EMBL/GenBank/DDBJ databases.

The MGC Project Team, Genome Res. 14:2121-2127(2004).



Western blot analysis of extracts from HT-29 cells, using RhoH antibody.



Immunofluorescence analysis of A549 cells, using RhoH antibody.