



Web: www.anbobio.com
www.dijibio.com
Order: order@dijibio.com
Tel: (86) 519 8805 0026

TSC22D1 Antibody [#C11099]

Catalog Number: C11099

Concentration: 1mg/ml

Swiss-Prot No.: Q15714

Other Names: TGFB-stimulated clone 22, TGFB114, TSC22, cerebral protein 2, regulatory protein TSC-22

Storage/Stability: Store at -20°C/1 year

Form of Antibody: Rabbit IgG in phosphate buffered saline (without Mg²⁺ and Ca²⁺), pH 7.4, 150mM NaCl, 0.02% sodium azide and 50% glycerol.

Immunogen: The antiserum was produced against synthesized peptide derived from internal of human TSC22D1.

Purification: The antibody was affinity-purified from

rabbit antiserum by affinity-chromatography using epitope-specific immunogen.

Specificity: TSC22D1 antibody detects endogenous levels of total TSC22D1 protein.

Reactivity: Human, Mouse, Rat

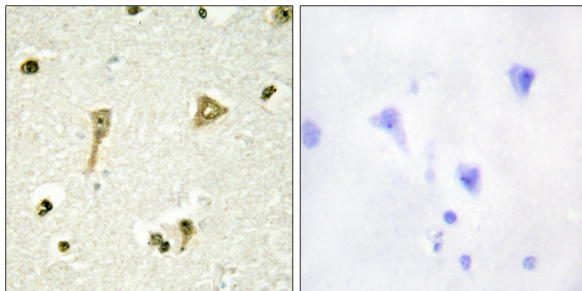
Applications: WB: 1:500~1:3000 IHC: 1:50~1:100
IF: 1:100~1:500 ELISA: 1:20000

References:

Jay P., Biochem. Biophys. Res. Commun. 222:821-826(1996).

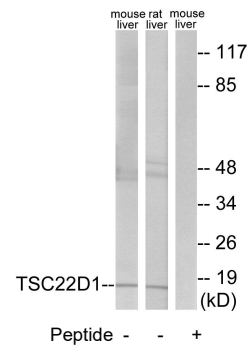
Ohta S., Eur. J. Biochem. 242:460-466(1996).

Dmitrenko V.V., Cyt. Genet. (Russ.) 30:41-47(1996).

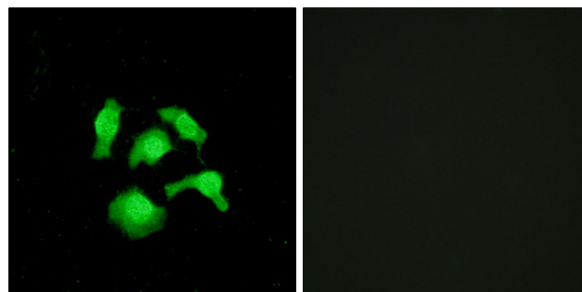


Peptide - +

Immunohistochemistry analysis of paraffin-embedded human brain tissue using TSC22D1 antibody.



Western blot analysis of extracts from mouse liver cells and rat liver cells, using TSC22D1 antibody.



Peptide - +

Immunofluorescence analysis of HepG2 cells, using TSC22D1 antibody.