



Web: www.anbobio.com

www.dijibio.com

Order: order@dijibio.com

Tel: (86) 519 8805 0026

TIP60 Antibody [#C11451]

Catalog Number: C11451

Concentration: 1mg/ml

Swiss-Prot No.: Q92993

Other Names: EC 2.3.1.48; EC 2.3.1.-; 60 kDa Tat interactive protein; Tip60; HIV-1 Tat interactive protein; cPLA(2)-interacting protein

Storage/Stability: Store at -20°C/1 year

Form of Antibody: Rabbit IgG in phosphate buffered saline (without Mg²⁺ and Ca²⁺), pH 7.4, 150mM NaCl, 0.02% sodium azide and 50% glycerol.

Immunogen: The antiserum was produced against synthesized peptide derived from internal of human TIP60.

Purification: The antibody was affinity-purified from rabbit antiserum by affinity-chromatography using epitope-specific immunogen.

Specificity: TIP60 antibody detects endogenous levels of total TIP60 protein.

Reactivity: Human (Identities = 100%, Positives = 100%);
Mouse (Identities = 100%, Positives = 100%);
Rat (Identities = 100%, Positives = 100%)

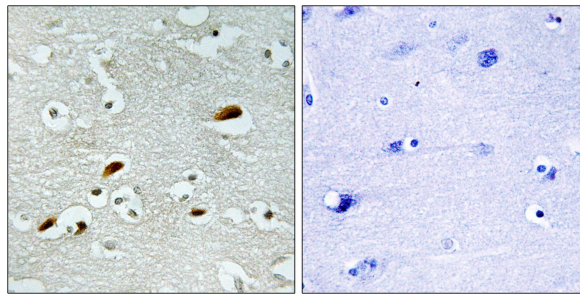
Applications: IHC: 1:50~1:100 ELISA: 1:20000

References:

Kamine J., Virology 216:357-366(1996).

Sheridan A.M., Mol. Cell. Biol. 21:4470-4481(2001).

Legube G., Gene 310:161-168(2003).



Peptide

-

+

Immunohistochemistry analysis of paraffin-embedded human brain tissue, using TIP60 antibody.