



Web: www.anbobio.com
www.dijibio.com
Order: order@dijibio.com
Tel: (86) 519 8805 0026

MED12 Antibody [#C11455]

Catalog Number: C11455

Concentration: 1mg/ml

Swiss-Prot No.: Q93074

Other Names: Thyroid hormone receptor-associated protein complex 230 kDa component; Trap230; Activator-recruited cofactor 240 kDa component; ARC240; CAG repeat protein 45; OPA-containing protein; Trinucleotide repeat-containing gene 11 protein

Storage/Stability: Store at -20°C/1 year

Form of Antibody: Rabbit IgG in phosphate buffered saline (without Mg²⁺ and Ca²⁺), pH 7.4, 150mM NaCl, 0.02% sodium azide and 50% glycerol.

Immunogen: The antiserum was produced against

synthesized peptide derived from internal of human MED12.

Purification: The antibody was affinity-purified from rabbit antiserum by affinity-chromatography using epitope-specific immunogen.

Specificity: MED12 antibody detects endogenous levels of total MED12 protein.

Reactivity: Human (Identities = 100%, Positives = 100%)

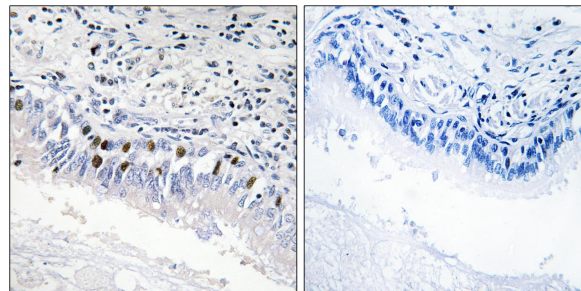
Applications: IHC: 1:50~1:100 ELISA: 1:5000

References:

Ito M., Mol. Cell 3:361-370(1999).

Nagase T., DNA Res. 3:17-24(1996).

Philibert R.A., Mol. Psychiatry 3:303-309(1998).



Peptide

-

+

Immunohistochemistry analysis of paraffin-embedded human lung carcinoma tissue, using MED12 antibody.