



Web: [www.anbobio.com](http://www.anbobio.com)  
[www.dijibio.com](http://www.dijibio.com)  
Order: [order@dijibio.com](mailto:order@dijibio.com)  
Tel: (86) 519 8805 0026

## Histone H2B Antibody [#C11456]

**Catalog Number:** C11456

**Concentration:** 1mg/ml

**Swiss-Prot No.:** Q93079

**Other Names:** Histone H2B type 1-H, H2B.j, H2B/j, HIST1H2BH, H2BFJ

**Storage/Stability:** Store at -20°C/1 year

**Form of Antibody:** Rabbit IgG in phosphate buffered saline (without Mg<sup>2+</sup> and Ca<sup>2+</sup>), pH 7.4, 150mM NaCl, 0.02% sodium azide and 50% glycerol.

**Immunogen:** The antiserum was produced against synthesized peptide derived from internal of human Histone H2B.

**Purification:** The antibody was affinity-purified from rabbit antiserum by affinity-chromatography using epitope-specific immunogen.

**Specificity:** Histone H2B antibody detects endogenous levels of total Histone H2B protein.

**Reactivity:** Human, Mouse

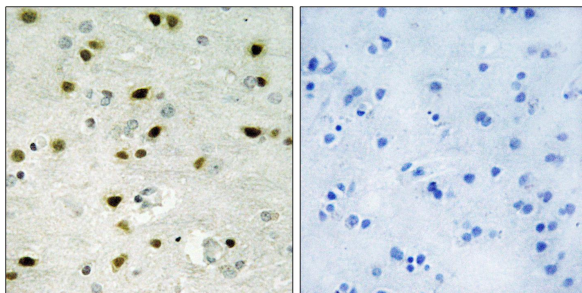
**Applications:** WB: 1:500~1:3000 IHC: 1:50~1:100  
IF: 1:100~1:500 ELISA: 1:5000

**References:**

Albig W., Genomics 40:314-322(1997).

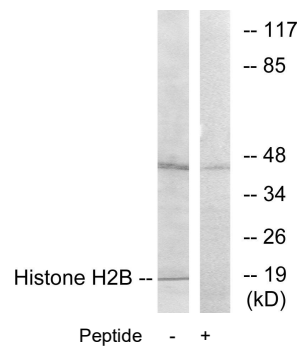
Marzluff W.F., Genomics 80:487-498(2002).

Mungall A.J., Nature 425:805-811(2003).

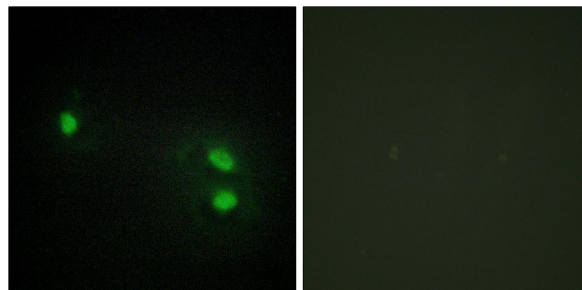


Peptide - +

Immunohistochemistry analysis of paraffin-embedded human brain tissue, using Histone H2B antibody.



Western blot analysis of extracts from A549 cells, using Histone H2B antibody.



Peptide - +

Immunofluorescence analysis of HeLa cells, using Histone H2B antibody.

**For Research Use Only**