



Web: www.anbobio.com
www.dijibio.com
Order: order@dijibio.com
Tel: (86) 519 8805 0026

VPS72 Antibody [#C11112]

Catalog Number: C11112

Concentration: 1mg/ml

Swiss-Prot No.: Q15906

Other Names: Vacuolar protein sorting-associated protein 72 homolog, Transcription factor-like 1, Protein YL-1, VPS72, TCFL1, YL1

Storage/Stability: Store at -20°C/1 year

Form of Antibody: Rabbit IgG in phosphate buffered saline (without Mg²⁺ and Ca²⁺), pH 7.4, 150mM NaCl, 0.02% sodium azide and 50% glycerol.

Immunogen: The antiserum was produced against synthesized peptide derived from internal of human VPS72.

Purification: The antibody was affinity-purified from rabbit antiserum by affinity-chromatography using epitope-specific immunogen.

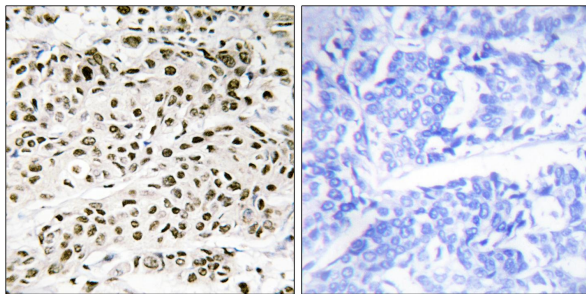
Specificity: VPS72 antibody detects endogenous levels of total VPS72 protein.

Reactivity: Human, Mouse

Applications: WB: 1:500~1:3000 IHC: 1:50~1:100
ELISA: 1:40000

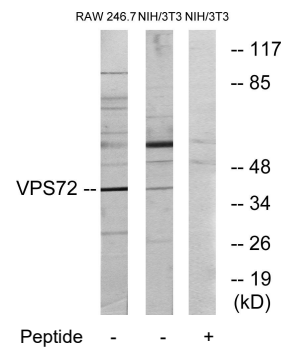
References:

Horikawa I., Biochem. Biophys. Res. Commun. 208:999-1007(1995).
Gregory S.G., Nature 441:315-321(2006).
Cai Y., J. Biol. Chem. 280:13665-13670(2005).



Peptide - +

Immunohistochemistry analysis of paraffin-embedded human breast carcinoma tissue using VPS72 antibody.



Western blot analysis of extracts from RAW264.7 cells and NIH/3T3 cells, using VPS72 antibody.