



**Web:** [www.anbobio.com](http://www.anbobio.com)  
[www.dijibio.com](http://www.dijibio.com)  
**Order:** [order@dijibio.com](mailto:order@dijibio.com)  
**Tel:** (86) 519 8805 0026

## ZFH3 Antibody [#C11114]

**Catalog Number:** C11114

**Concentration:** 1mg/ml

**Swiss-Prot No.:** Q15911

**Other Names:** Zinc finger homeodomain protein 3; ZFH-3; Alpha-fetoprotein enhancer-binding protein; AT motif-binding factor; AT-binding transcription factor 1

**Storage/Stability:** Store at -20°C/1 year

**Form of Antibody:** Rabbit IgG in phosphate buffered saline (without Mg<sup>2+</sup> and Ca<sup>2+</sup>), pH 7.4, 150mM NaCl, 0.02% sodium azide and 50% glycerol.

**Immunogen:** The antiserum was produced against synthesized peptide derived from internal of human ZFH3.

**Purification:** The antibody was affinity-purified from rabbit antiserum by affinity-chromatography using epitope-specific immunogen.

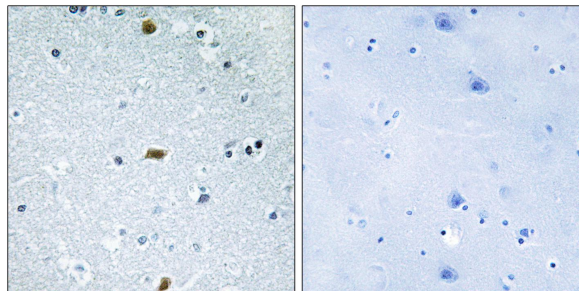
**Specificity:** ZFH3 antibody detects endogenous levels of total ZFH3 protein.

**Reactivity:** Human (Identities = 100%, Positives = 100%);  
Mouse (Identities = 100%, Positives = 100%)

**Applications:** IHC: 1:50~1:100 ELISA: 1:10000

**References:**

Miura Y., J. Biol. Chem. 270:26840-26848(1995).  
Morinaga T., Mol. Cell. Biol. 11:6041-6049(1991).  
Martin J., Nature 432:988-994(2004).



Peptide

-

+

Immunohistochemistry analysis of paraffin-embedded human brain tissue, using ZFH3 antibody.