



Web: www.anbobio.com

www.dijibio.com

Order: order@dijibio.com

Tel: (86) 519 8805 0026

BATF Antibody [#C11122]

Catalog Number: C11122

Concentration: 1mg/ml

Swiss-Prot No.: Q16520

Other Names: B-ATF; SF-HT-activated gene 2 protein; SFA-2

Storage/Stability: Store at -20°C/1 year

Form of Antibody: Rabbit IgG in phosphate buffered saline (without Mg²⁺ and Ca²⁺), pH 7.4, 150mM NaCl, 0.02% sodium azide and 50% glycerol.

Immunogen: The antiserum was produced against synthesized peptide derived from internal of human BATF.

Purification: The antibody was affinity-purified from

rabbit antiserum by affinity-chromatography using epitope-specific immunogen.

Specificity: BATF antibody detects endogenous levels of total BATF protein.

Reactivity: Human (Identities = 100%, Positives = 100%);
Mouse (Identities = 90%, Positives = 100%)

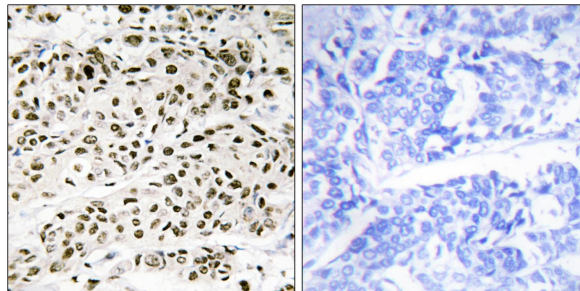
Applications: IHC: 1:50~1:100 ELISA: 1:1000

References:

Dorsey M.J., *Oncogene* 11:2255-2265(1995).

Hasegawa H., *Biochem. Biophys. Res. Commun.* 222:164-170(1996).

Meyer N.P., *Mamm. Genome* 9:849-852(1998).



Peptide

-

+

Immunohistochemistry analysis of paraffin-embedded human breast carcinoma tissue, using BATF antibody.