



Web: [www.anbobio.com](http://www.anbobio.com)  
[www.dijibio.com](http://www.dijibio.com)  
Order: [order@dijibio.com](mailto:order@dijibio.com)  
Tel: (86) 519 8805 0026

## MAPK3 Antibody [#C11133]

**Catalog Number:** C11133

**Concentration:** 1mg/ml

**Swiss-Prot No.:** Q16644

**Other Names:** MAP kinase-activated protein kinase 3, EC 2.7.11.1, MAPK-activated protein kinase 3, MAPKAP kinase 3, MAPKAPK-3, Chromosome 3p kinase 3pK, MAPKAPK3

**Storage/Stability:** Store at -20°C/1 year

**Form of Antibody:** Rabbit IgG in phosphate buffered saline (without Mg<sup>2+</sup> and Ca<sup>2+</sup>), pH 7.4, 150mM NaCl, 0.02% sodium azide and 50% glycerol.

**Immunogen:** The antiserum was produced against synthesized peptide derived from internal of human

MAPK3.

**Purification:** The antibody was affinity-purified from rabbit antiserum by affinity-chromatography using epitope-specific immunogen.

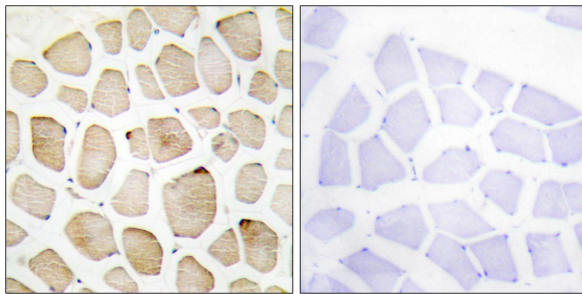
**Specificity:** MAPK3 antibody detects endogenous levels of total MAPK3 protein.

**Reactivity:** Human, Mouse, Rat

**Applications:** WB: 1:500~1:3000 IHC: 1:50~1:100  
ELISA: 1:20000

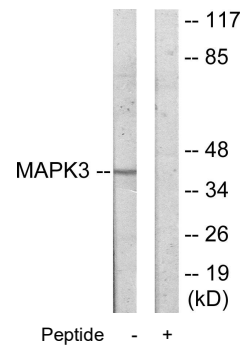
**References:**

McLaughlin M.M., J. Biol. Chem. 271:8488-8492(1996).  
Sithanandam G., Mol. Cell. Biol. 16:868-876(1996).  
Neufeld B., J. Biol. Chem. 275:20239-20242(2000).



Peptide - +

Immunohistochemistry analysis of paraffin-embedded human skeletal muscle tissue using MAPK3 antibody.



Western blot analysis of extracts from COLO205 cells, using MAPK3 antibody.