



**Web:** [www.anbobio.com](http://www.anbobio.com)  
[www.dijibio.com](http://www.dijibio.com)  
**Order:** [order@dijibio.com](mailto:order@dijibio.com)  
**Tel:** (86) 519 8805 0026

## PHLA2 Antibody [#C11168]

**Catalog Number:** C11168

**Concentration:** 1mg/ml

**Swiss-Prot No.:** Q53GA4

**Other Names:** Imprinted in placenta and liver protein; Tumor-suppressing subchromosomal transferable fragment candidate gene 3 protein; Tumor-suppressing STF cDNA 3 protein; Beckwith-Wiedemann syndrome chromosomal region 1 candidate gene C protein; p17-Beckwith-Wiedemann region 1 C; p17-BWR1C

**Storage/Stability:** Store at -20°C/1 year

**Form of Antibody:** Rabbit IgG in phosphate buffered saline (without Mg<sup>2+</sup> and Ca<sup>2+</sup>), pH 7.4, 150mM NaCl, 0.02% sodium azide and 50% glycerol.

**Immunogen:** The antiserum was produced against

synthesized peptide derived from internal of human PHLA2.

**Purification:** The antibody was affinity-purified from rabbit antiserum by affinity-chromatography using epitope-specific immunogen.

**Specificity:** PHLA2 antibody detects endogenous levels of total PHLA2 protein.

**Reactivity:** Human (Identities = 100%, Positives = 100%)

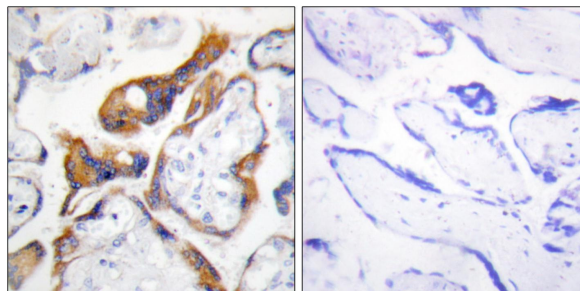
**Applications:** IHC: 1:50~1:100 ELISA: 1:20000

**References:**

Hu R.-J., Genomics 46:9-17(1997).

Qian N., Hum. Mol. Genet. 6:2021-2029(1997).

Schwiebacher C., Proc. Natl. Acad. Sci. U.S.A. 95:3873-3878(1998).



Peptide

-

+

Immunohistochemistry analysis of paraffin-embedded human placenta tissue, using PHLA2 antibody.