



Web: [www.anbobio.com](http://www.anbobio.com)  
[www.dijibio.com](http://www.dijibio.com)  
Order: [order@dijibio.com](mailto:order@dijibio.com)  
Tel: (86) 519 8805 0026

## CDKL4 Antibody [#C11182]

**Catalog Number:** C11182

**Concentration:** 1mg/ml

**Swiss-Prot No.:** Q5MAI5

**Other Names:** EC 2.7.11.22, Cyclin-dependent kinase-like 4, CDKL4

**Storage/Stability:** Store at -20°C/1 year

**Form of Antibody:** Rabbit IgG in phosphate buffered saline (without Mg<sup>2+</sup> and Ca<sup>2+</sup>), pH 7.4, 150mM NaCl, 0.02% sodium azide and 50% glycerol.

**Immunogen:** The antiserum was produced against synthesized peptide derived from C-terminal of human CDKL4.

**Purification:** The antibody was affinity-purified from rabbit antiserum by affinity-chromatography using epitope-specific immunogen.

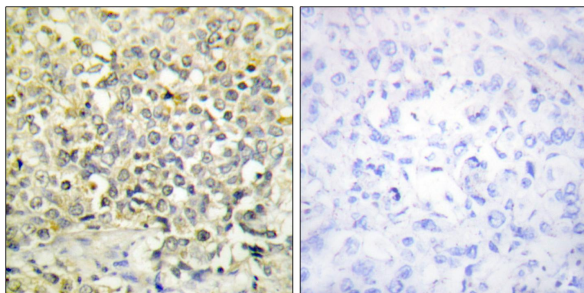
**Specificity:** CDKL4 antibody detects endogenous levels of total CDKL4 protein.

**Reactivity:** Human

**Applications:** WB: 1:500~1:3000 IHC: 1:50~1:100  
IF: 1:100~1:500 ELISA: 1:40000

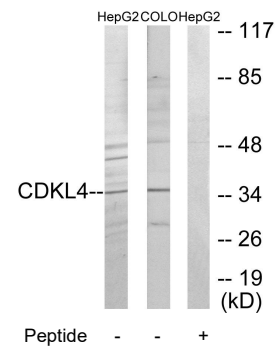
**References:**

Wang P.Z., Submitted (DEC-2004) to the EMBL/GenBank/DDBJ databases.

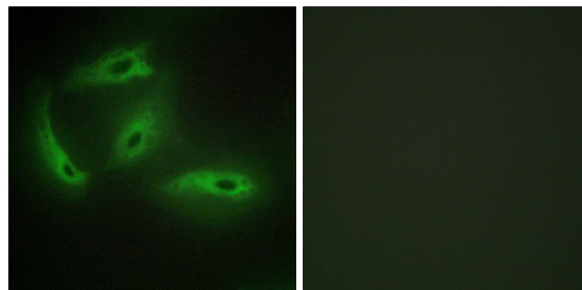


Peptide - +

Immunohistochemistry analysis of paraffin-embedded human lung carcinoma tissue using CDKL4 antibody.



Western blot analysis of extracts from HepG2 cells and COLO205 cells, using CDKL4 antibody.



Peptide - +

Immunofluorescence analysis of HeLa cells, using CDKL4 antibody.