



**Web:** [www.anbobio.com](http://www.anbobio.com)  
[www.dijibio.com](http://www.dijibio.com)  
**Order:** [order@dijibio.com](mailto:order@dijibio.com)  
**Tel:** (86) 519 8805 0026

## RHG07 Antibody [#C11532]

**Catalog Number:** C11532

**Concentration:** 1mg/ml

**Swiss-Prot No.:** Q96QB1

**Other Names:** Rho-type GTPase-activating protein 7; Deleted in liver cancer 1 protein; Dlc-1; HP protein; StAR-related lipid transfer protein 12; StARD12; START domain-containing protein 12

**Storage/Stability:** Store at -20°C/1 year

**Form of Antibody:** Rabbit IgG in phosphate buffered saline (without Mg<sup>2+</sup> and Ca<sup>2+</sup>), pH 7.4, 150mM NaCl, 0.02% sodium azide and 50% glycerol.

**Immunogen:** The antiserum was produced against synthesized peptide derived from internal of human RHG07.

**Purification:** The antibody was affinity-purified from rabbit antiserum by affinity-chromatography using epitope-specific immunogen.

**Specificity:** RHG07 antibody detects endogenous levels of total RHG07 protein.

**Reactivity:** Human (Identities = 100%, Positives = 100%);  
Mouse (Identities = 92%, Positives = 100%);  
Rat (Identities = 92%, Positives = 100%)

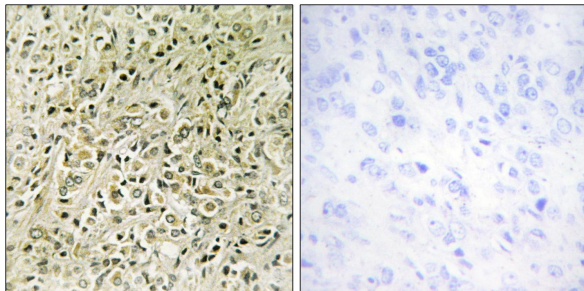
**Applications:** IHC: 1:50~1:100 IF: 1:100~1:500  
ELISA: 1:10000

**References:**

Yuan B.Z., Cancer Res. 58:2196-2199(1998).

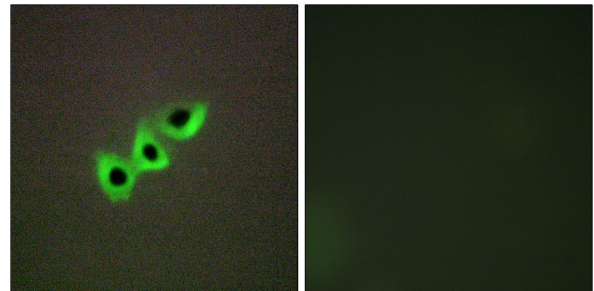
Nagase T., DNA Res. 7:347-355(2000).

Wilson P.J., Hum. Mutat. 15:156-165(2000).



Peptide - +

Immunohistochemistry analysis of paraffin-embedded human prostate carcinoma tissue, using RHG07 antibody.



Peptide - +

Immunofluorescence analysis of A549 cells, using RHG07 antibody.