



Web: www.anbobio.com
www.dijibio.com
Order: order@dijibio.com
Tel: (86) 519 8805 0026

RPS6KC1 Antibody [#C11546]

Catalog Number: C11546

Concentration: 1mg/ml

Swiss-Prot No.: Q96S38

Other Names: EC 2.7.11.1; KS6C1; RPK118

Storage/Stability: Store at -20°C/1 year

Form of Antibody: Rabbit IgG in phosphate buffered saline (without Mg²⁺ and Ca²⁺), pH 7.4, 150mM NaCl, 0.02% sodium azide and 50% glycerol.

Immunogen: The antiserum was produced against synthesized peptide derived from internal of human RPS6KC1.

Purification: The antibody was affinity-purified from

rabbit antiserum by affinity-chromatography using epitope-specific immunogen.

Specificity: RPS6KC1 antibody detects endogenous levels of total RPS6KC1 protein.

Reactivity: Human, Mouse

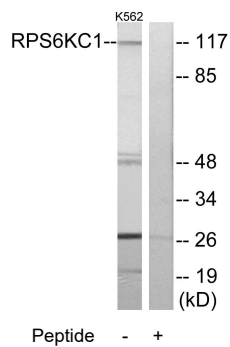
Applications: WB: 1:500~1:3000 IF: 1:100~1:500
ELISA: 1:20000

References:

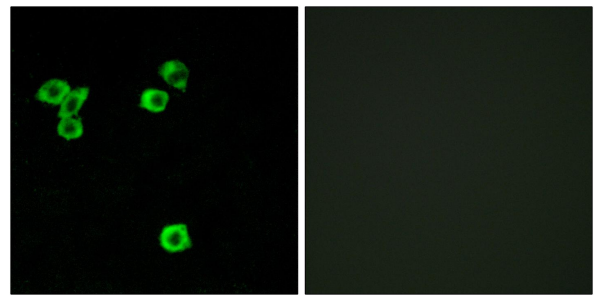
Hayashi S., J. Biol. Chem. 277:33319-33324(2002).

Gregory S.G., Nature 441:315-321(2006).

Zhang H., Genomics 61:314-318(1999).



Western blot analysis of extracts from K562 cells, using RPS6KC1 antibody.



Immunofluorescence analysis of LOVO cells, using RPS6KC1 antibody.