



Web: www.anbobio.com
www.dijibio.com
Order: order@dijibio.com
Tel: (86) 519 8805 0026

SERC2 Antibody [#C11547]

Catalog Number: C11547

Concentration: 1mg/ml

Swiss-Prot No.: Q96SA4

Other Names: Serine incorporator 2, Tumor differentially expressed 2-like, SERINC2, TDE2L, FKSG84, UNQ263/PRO300

Storage/Stability: Store at -20°C/1 year

Form of Antibody: Rabbit IgG in phosphate buffered saline (without Mg²⁺ and Ca²⁺), pH 7.4, 150mM NaCl, 0.02% sodium azide and 50% glycerol.

Immunogen: The antiserum was produced against synthesized peptide derived from internal of human SERC2.

Purification: The antibody was affinity-purified from

rabbit antiserum by affinity-chromatography using epitope-specific immunogen.

Specificity: SERC2 antibody detects endogenous levels of total SERC2 protein.

Reactivity: Human, Mouse, Rat

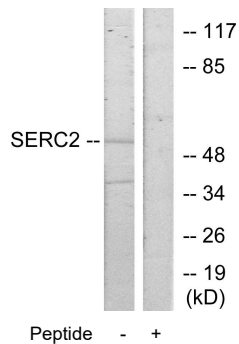
Applications: WB: 1:500~1:3000 IF: 1:100~1:500
ELISA: 1:40000

References:

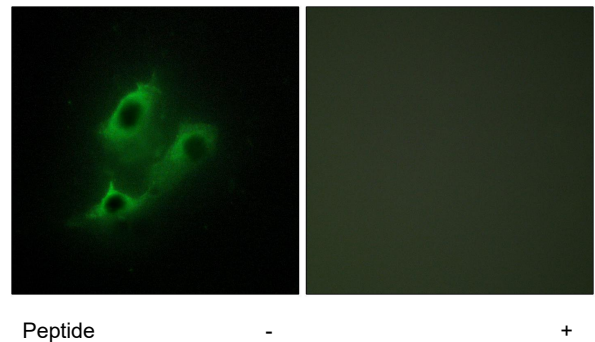
Wang Y.-G., Submitted (FEB-2001) to the EMBL/GenBank/DDBJ databases.

Clark H.F., Genome Res. 13:2265-2270(2003).

The MGC Project Team, Genome Res. 14:2121-2127(2004).



Western blot analysis of extracts from HeLa cells, using SERC2 antibody.



Immunofluorescence analysis of NIH/3T3 cells, using SERC2 antibody.