



Web: www.anbobio.com
www.dijibio.com
Order: order@dijibio.com
Tel: (86) 519 8805 0026

BEGIN Antibody [#C11619]

Catalog Number: C11619

Concentration: 1mg/ml

Swiss-Prot No.: Q9BUH8

Other Names: Brain-enriched guanylate kinase-associated protein, BEGAIN, KIAA1446

Storage/Stability: Store at -20°C/1 year

Form of Antibody: Rabbit IgG in phosphate buffered saline (without Mg²⁺ and Ca²⁺), pH 7.4, 150mM NaCl, 0.02% sodium azide and 50% glycerol.

Immunogen: The antiserum was produced against synthesized peptide derived from internal of human BEGIN.

Purification: The antibody was affinity-purified from rabbit antiserum by affinity-chromatography using

epitope-specific immunogen.

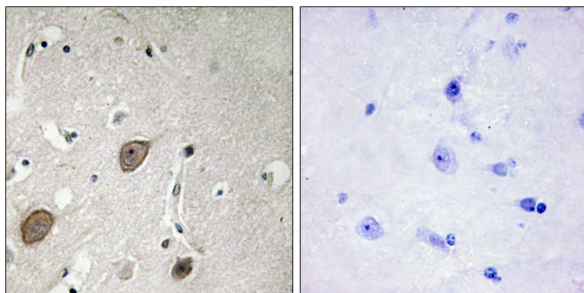
Specificity: BEGIN antibody detects endogenous levels of total BEGIN protein.

Reactivity: Human (Identities = 100%, Positives = 100%);
Mouse (Identities = 100%, Positives = 100%);
Rat (Identities = 100%, Positives = 100%)

Applications: IHC: 1:50~1:100 IF: 1:100~1:500
ELISA: 1:1000

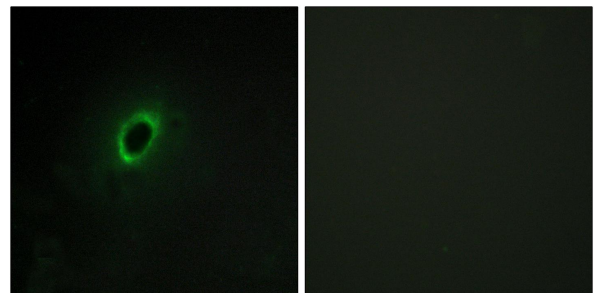
References:

The MGC Project Team, Genome Res. 14:2121-2127(2004).
Nagase T., DNA Res. 7:143-150(2000).
Olsen J.V., Cell 127:635-648(2006).



Peptide - +

Immunohistochemistry analysis of paraffin-embedded human breast carcinoma tissue, using BEGIN antibody.



Peptide - +

Immunofluorescence analysis of HeLa cells, using BEGIN antibody.