



Web: www.anbobio.com
www.dijibio.com
Order: order@dijibio.com
Tel: (86) 519 8805 0026

DUSP16 Antibody [#C11640]

Catalog Number: C11640

Concentration: 1mg/ml

Swiss-Prot No.: Q9BY84

Other Names: Dual specificity protein phosphatase 16, EC 3.1.3.48, EC 3.1.3.16, Mitogen-activated protein kinase phosphatase 7, MAP kinase phosphatase 7, MKP-7, DUSP16, KIAA1700, MKP7

Storage/Stability: Store at -20°C/1 year

Form of Antibody: Rabbit IgG in phosphate buffered saline (without Mg²⁺ and Ca²⁺), pH 7.4, 150mM NaCl, 0.02% sodium azide and 50% glycerol.

Immunogen: The antiserum was produced against synthesized peptide derived from internal of human

DUSP16.

Purification: The antibody was affinity-purified from rabbit antiserum by affinity-chromatography using epitope-specific immunogen.

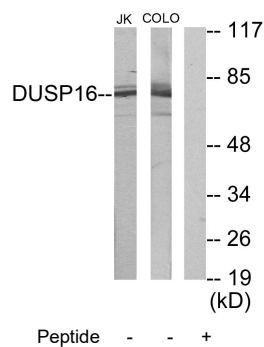
Specificity: DUSP16 antibody detects endogenous levels of total DUSP16 protein.

Reactivity: Human, Mouse

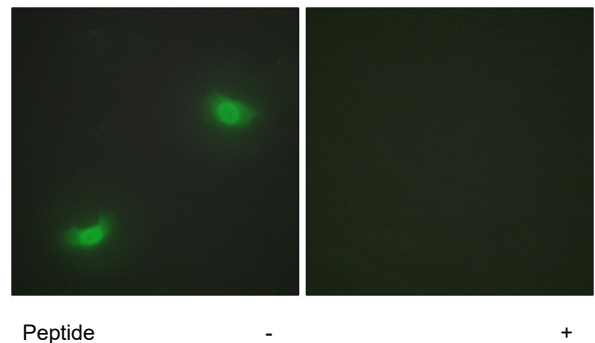
Applications: WB: 1:500~1:3000 IF: 1:100~1:500
ELISA: 1:10000

References:

Masuda K., J. Biol. Chem. 276:39002-39011(2001).
Hoornaert I., Oncogene 22:7728-7736(2003).
Nagase T., DNA Res. 7:347-355(2000).



Western blot analysis of extracts from Jurkat cells and COLO205 cells, using DUSP16 antibody.



Immunofluorescence analysis of HepG2 cells, using DUSP16 antibody.