



Web: www.anbobio.com
www.dijibio.com
Order: order@dijibio.com
Tel: (86) 519 8805 0026

TMEPA Antibody [#C11467]

Catalog Number: C11467

Concentration: 1mg/ml

Swiss-Prot No.: Q969W9

Other Names: Transmembrane prostate androgen-induced protein, Solid tumor-associated 1 protein, TMEPAI, PMEPA1, STAG1

Storage/Stability: Store at -20°C/1 year

Form of Antibody: Rabbit IgG in phosphate buffered saline (without Mg²⁺ and Ca²⁺), pH 7.4, 150mM NaCl, 0.02% sodium azide and 50% glycerol.

Immunogen: The antiserum was produced against synthesized peptide derived from internal of human TMEPA.

Purification: The antibody was affinity-purified from rabbit antiserum by affinity-chromatography using epitope-specific immunogen.

Specificity: TMEPA antibody detects endogenous levels of total TMEPA protein.

Reactivity: Human

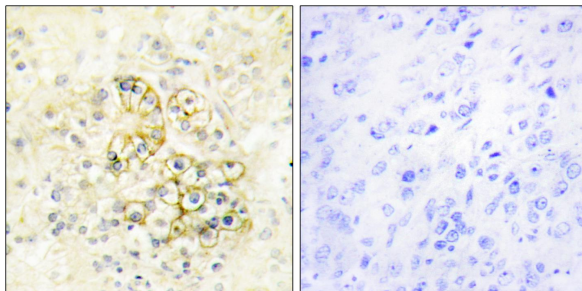
Applications: WB: 1:500~1:3000 IHC: 1:50~1:100
IF: 1:100~1:500 ELISA: 1:20000

References:

Xu L.L., Genomics 66:257-263(2000).

Rae F.K., Mol. Carcinog. 32:44-53(2001).

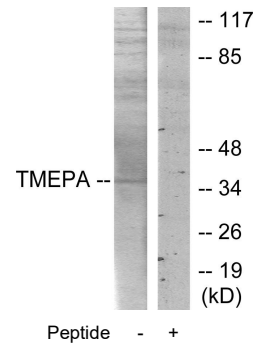
Deloukas P., Nature 414:865-871(2001).



Peptide -

+

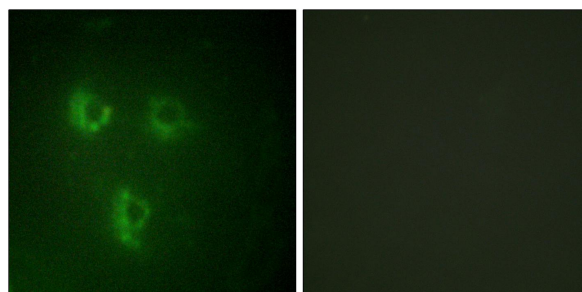
Immunohistochemistry analysis of paraffin-embedded human prostate tissue using TMEPA antibody.



Peptide -

+

Western blot analysis of extracts from HT-29 cells, using TMEPA antibody.



Peptide -

+

Immunofluorescence analysis of HUVEC cells, using TMEPA antibody.

