



Web: www.anbobio.com
www.dijibio.com
Order: order@dijibio.com
Tel: (86) 519 8805 0026

JKIP2 Antibody [#C11472]

Catalog Number: C11472

Concentration: 1mg/ml

Swiss-Prot No.: Q96AA8

Other Names: Janus kinase and microtubule-interacting protein 2, Jamip2, Neuroendocrine long coiled-coil protein 1, CTCL tumor antigen HD-CL-04, JAKMIP2, KIAA0555, NECC1

Storage/Stability: Store at -20°C/1 year

Form of Antibody: Rabbit IgG in phosphate buffered saline (without Mg²⁺ and Ca²⁺), pH 7.4, 150mM NaCl, 0.02% sodium azide and 50% glycerol.

Immunogen: The antiserum was produced against synthesized peptide derived from C-terminal of human

Stathmin.

Purification: The antibody was affinity-purified from rabbit antiserum by affinity-chromatography using epitope-specific immunogen.

Specificity: JKIP2 antibody detects endogenous levels of total JKIP2 protein.

Reactivity: Human

Applications: WB: 1:500~1:3000 IHC: 1:50~1:100

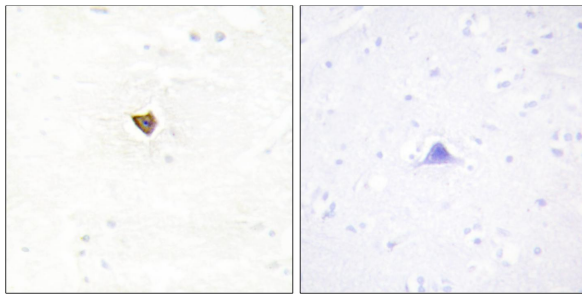
ELISA: 1:5000

References:

Cruz-Garcia D., FEBS Lett. 581:3149-3156(2007).

Hartmann T.B., Br. J. Dermatol. 150:252-258(2004).

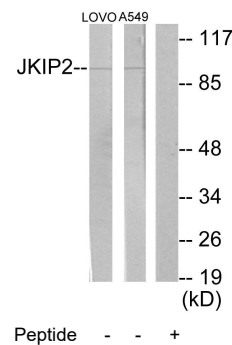
Nagase T., DNA Res. 5:31-39(1998).



Peptide -

+

Immunohistochemistry analysis of paraffin-embedded human brain tissue using JKIP2 antibody.



Peptide -

+

Western blot analysis of extracts from LOVO cells and A549 cells, using JKIP2 antibody.