



Web: www.anbobio.com
www.dijibio.com
Order: order@dijibio.com
Tel: (86) 519 8805 0026

MOBKL2A/B Antibody [#C11480]

Catalog Number: C11480

Concentration: 1mg/ml

Swiss-Prot No.: Q96BX8/Q86TA1

Other Names: Mps one binder kinase activator-like 2A, MOB-LAK, Mob1 homolog 2A, Protein Mob3A

Storage/Stability: Store at -20°C/1 year

Form of Antibody: Rabbit IgG in phosphate buffered saline (without Mg²⁺ and Ca²⁺), pH 7.4, 150mM NaCl, 0.02% sodium azide and 50% glycerol.

Immunogen: The antiserum was produced against synthesized peptide derived from internal of human MOBKL2A/B.

Purification: The antibody was affinity-purified from rabbit antiserum by affinity-chromatography using epitope-specific immunogen.

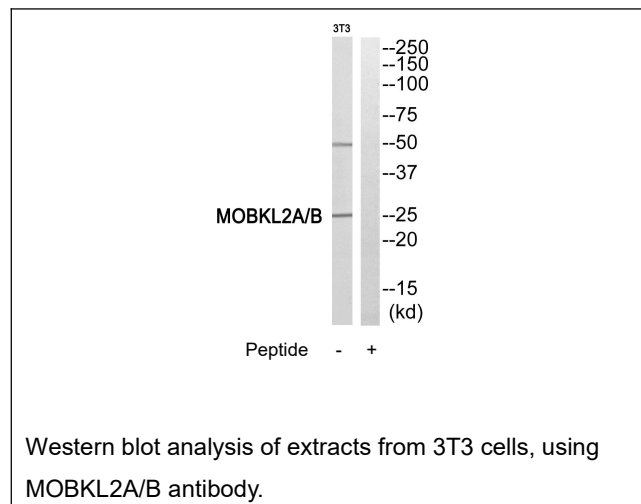
Specificity: MOBKL2A/B antibody detects endogenous levels of total MOBKL2A/B protein.

Reactivity: Human; Mouse

Applications: WB: 1:500~1:3000 ELISA: 1:5000

References:

Ota T., Nat. Genet. 36:40-45(2004) [PubMed: 14702039].
Grimwood J., Nature 428:529-535(2004) [PubMed: 15057824].



For Research Use Only