



Web: www.anbobio.com
www.dijibio.com
Order: order@dijibio.com
Tel: +86 519 8805 0026

NPY2R Antibody [#G410]

Catalog Number: G410

Concentration: 1mg/ml

Swiss-Prot No.: P49146

Other Names: Neuropeptide Y receptor type 2; NPY-Y2 receptor; NPY2-R

Storage/Stability: Store at -20°C/1 year

Form of Antibody: Rabbit IgG in phosphate buffered saline (without Mg²⁺ and Ca²⁺), pH 7.4, 150mM NaCl, 0.02% sodium azide and 50% glycerol.

Immunogen: The antiserum was produced against synthesized peptide derived from internal of human NPY2R.

Purification: The antibody was affinity-purified from rabbit antiserum by affinity-chromatography using epitope-specific immunogen.

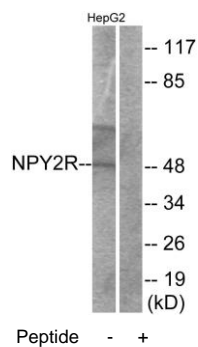
Specificity: NPY2R antibody detects endogenous levels of total NPY2R protein.

Reactivity: Human, Mouse, Rat

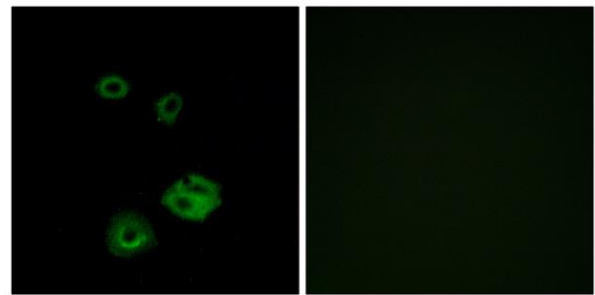
Applications: WB: 1:500~1:3000 IF: 1:100~1:500
ELISA: 1:1000

References:

Gerald C., J. Biol. Chem. 270:26758-26761(1995).
Gehlert D.R., Mol. Pharmacol. 49:224-228(1996).
Rose P.M., J. Biol. Chem. 270:22661-22664(1995).



Western blot analysis of extracts from HepG2 cells, using NPY2R antibody.



Immunofluorescence analysis of A549 cells, using NPY2R antibody.