



Web: www.anbobio.com
www.dijibio.com
Order: order@dijibio.com
Tel: (86) 519 8805 0026

SCNN1D Antibody [#C14438]

Catalog Number: C14438

Concentration: 1mg/ml

Swiss-Prot No.: P51172

Other Names: Amiloride-sensitive sodium channel subunit delta; Epithelial Na(+) channel subunit delta; Delta-ENaC; SCNED; Nonvoltage-gated sodium channel 1 subunit delta; Delta-NaCH; DNACH

Storage/Stability: Store at -20°C/1 year

Form of Antibody: Rabbit IgG in phosphate buffered saline (without Mg²⁺ and Ca²⁺), pH 7.4, 150mM NaCl, 0.02% sodium azide and 50% glycerol.

Immunogen: The antiserum was produced against synthesized peptide derived from internal of human

SCNN1D.

Purification: The antibody was affinity-purified from rabbit antiserum by affinity-chromatography using epitope-specific immunogen.

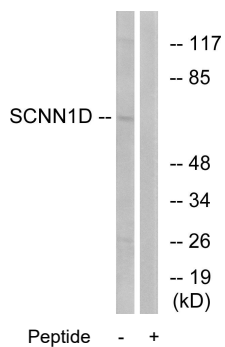
Specificity: SCNN1D antibody detects endogenous levels of total SCNN1D protein.

Reactivity: Human

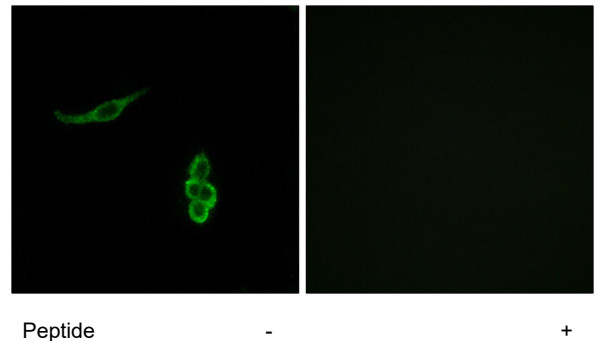
Applications: WB: 1:500~1:3000 IF: 1:100~1:500
ELISA: 1:20000

References:

Waldmann R., J. Biol. Chem. 270:27411-27414(1995).
Ota T., Nat. Genet. 36:40-45(2004).
Gregory S.G., Nature 441:315-321(2006).



Western blot analysis of extracts from RAW264.7 cells, using SCNN1D antibody.



Immunofluorescence analysis of A549 cells, using SCNN1D antibody.