



Web: www.anbobio.com
www.dijibio.com
Order: order@dijibio.com
Tel: (86) 519 8805 0026

APBB2 Antibody [#C14453]

Catalog Number: C14453

Concentration: 1mg/ml

Swiss-Prot No.: Q92870

Other Names: amyloid beta A4 precursor protein-binding family B member 2; Fe65-like protein

Storage/Stability: Store at -20°C/1 year

Form of Antibody: Rabbit IgG in phosphate buffered saline (without Mg²⁺ and Ca²⁺), pH 7.4, 150mM NaCl, 0.02% sodium azide and 50% glycerol.

Immunogen: The antiserum was produced against synthesized peptide derived from internal of human APBB2.

Purification: The antibody was affinity-purified from

rabbit antiserum by affinity-chromatography using epitope-specific immunogen.

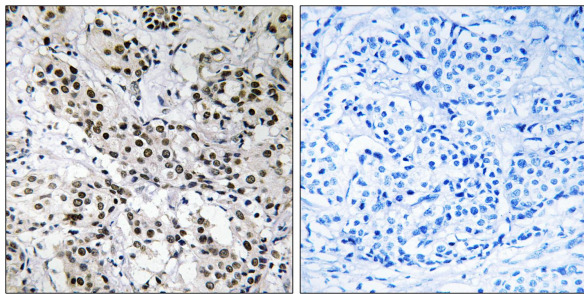
Specificity: APBB2 antibody detects endogenous levels of total APBB2 protein.

Reactivity: Human (Identities = 100%, Positives = 100%);
Mouse (Identities = 100%, Positives = 100%)

Applications: WB: 1:500~1:3000 IHC: 1:50~1:100
ELISA: 1:40000

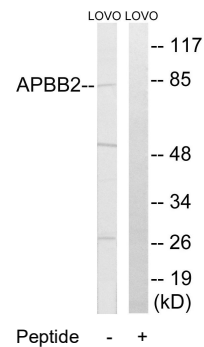
References:

The MGC Project Team; Genome Res. 14:2121-2127(2004).
Guenette S.Y., Proc. Natl. Acad. Sci. U.S.A. 93:10832-10837(1996).



Peptide - +

Immunohistochemistry analysis of paraffin-embedded human breast carcinoma tissue using APBB2 antibody.



Western blot analysis of extracts from LOVO cells, using APBB2 antibody.