



Web: [www.anbobio.com](http://www.anbobio.com)  
[www.dijibio.com](http://www.dijibio.com)  
Order: [order@dijibio.com](mailto:order@dijibio.com)  
Tel: (86) 519 8805 0026

## AMOTL1 Antibody [#C14473]

**Catalog Number:** C14473

**Concentration:** 1mg/ml

**Swiss-Prot No.:** Q8IY63

**Other Names:** Angiotensin-like protein 1

**Storage/Stability:** Store at -20°C/1 year

**Form of Antibody:** Rabbit IgG in phosphate buffered saline (without Mg<sup>2+</sup> and Ca<sup>2+</sup>), pH 7.4, 150mM NaCl, 0.02% sodium azide and 50% glycerol.

**Immunogen:** The antiserum was produced against synthesized peptide derived from internal of human AMOTL1.

**Purification:** The antibody was affinity-purified from

rabbit antiserum by affinity-chromatography using epitope-specific immunogen.

**Specificity:** AMOTL1 antibody detects endogenous levels of total AMOTL1 protein.

**Reactivity:** Human (Identities = 100%, Positives = 100%);  
Mouse (Identities = 100%, Positives = 100%)

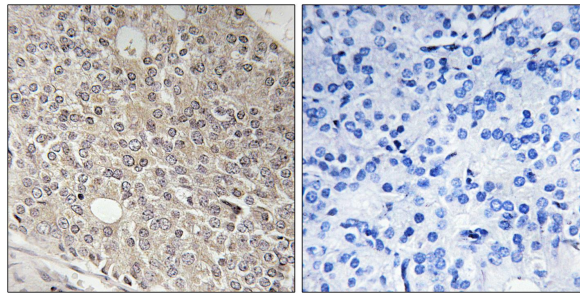
**Applications:** IHC: 1:50~1:100 ELISA: 1:10000

**References:**

Bratt A., Gene 298:69-77(2002).

Bratt A., Gene 310:231-231(2003).

Yu L.-R., J. Proteome Res. 6:4150-4162(2007).



Peptide - +

Immunohistochemistry analysis of paraffin-embedded human prostate carcinoma tissue using AMOTL1 antibody.

**For Research Use Only**