



Web: www.anbobio.com
www.dijibio.com
Order: order@dijibio.com
Tel: (86) 519 8805 0026

KANK2 Antibody [#C14496]

Catalog Number: C14496

Concentration: 1mg/ml

Swiss-Prot No.: Q63ZY3

Other Names: Ankyrin repeat domain-containing protein 25; SRC-1-interacting protein; SRC1-interacting protein; Matrix-remodeling-associated protein 3

Storage/Stability: Store at -20°C/1 year

Form of Antibody: Rabbit IgG in phosphate buffered saline (without Mg²⁺ and Ca²⁺), pH 7.4, 150mM NaCl, 0.02% sodium azide and 50% glycerol.

Immunogen: The antiserum was produced against synthesized peptide derived from internal of human KANK2.

Purification: The antibody was affinity-purified from rabbit antiserum by affinity-chromatography using epitope-specific immunogen.

Specificity: KANK2 antibody detects endogenous levels of total KANK2 protein.

Reactivity: Human (Identities = 100%, Positives = 100%)

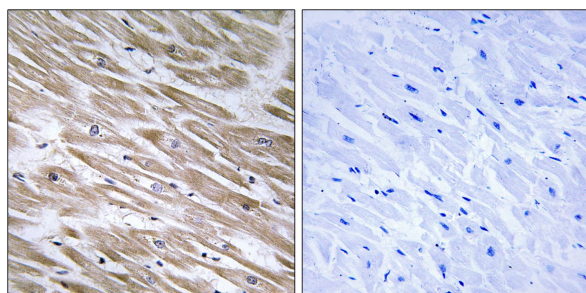
Applications: IHC: 1:50~1:100 IF: 1:100~1:500
ELISA: 1:40000

References:

Nagase T., DNA Res. 7:143-150(2000).

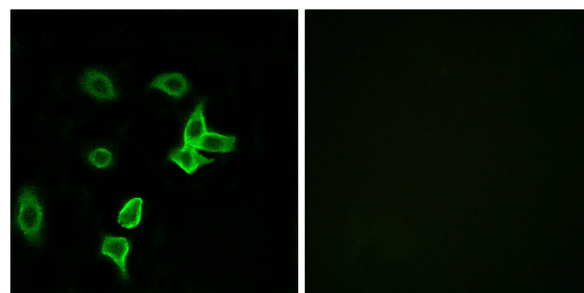
Ota T., Nat. Genet. 36:40-45(2004).

Olsen J.V., Cell 127:635-648(2006).



Peptide - +

Immunohistochemistry analysis of paraffin-embedded human heart tissue using KANK2 antibody.



Peptide - +

Immunofluorescence analysis of A549 cells, using KANK2 antibody.