



Web: www.anbobio.com

www.dijibio.com

Order: order@dijibio.com

Tel: (86) 519 8805 0026

APOL2 Antibody [#C14540]

Catalog Number: C14540

Concentration: 1mg/ml

Swiss-Prot No.: Q9BQE5

Other Names: apoL-II; apolipoprotein L-II;
apolipoprotein-L2

Storage/Stability: Store at -20°C/1 year

Form of Antibody: Rabbit IgG in phosphate buffered saline (without Mg²⁺ and Ca²⁺), pH 7.4, 150mM NaCl, 0.02% sodium azide and 50% glycerol.

Immunogen: The antiserum was produced against synthesized peptide derived from internal of human APOL2.

Purification: The antibody was affinity-purified from rabbit antiserum by affinity-chromatography using epitope-specific immunogen.

Specificity: APOL2 antibody detects endogenous levels of total APOL2 protein.

Reactivity: Human

Applications: WB: 1:500~1:3000 IHC: 1:50~1:100

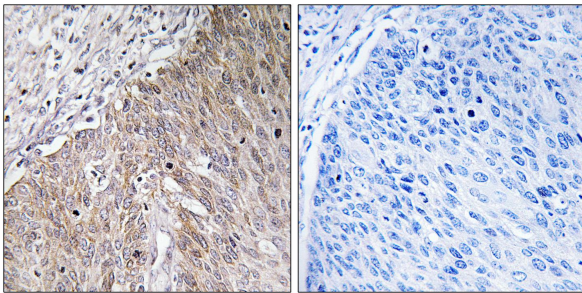
IF: 1:100~1:500 ELISA: 1:40000

References:

Page N.M., Genomics 74:71-78(2001).

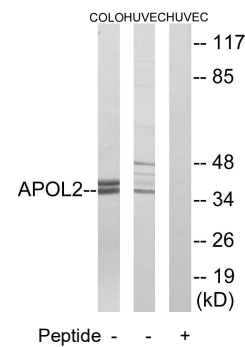
Duchateau P.N., J. Lipid Res. 42:620-630(2001).

Monajemi H., Genomics 79:539-546(2002).



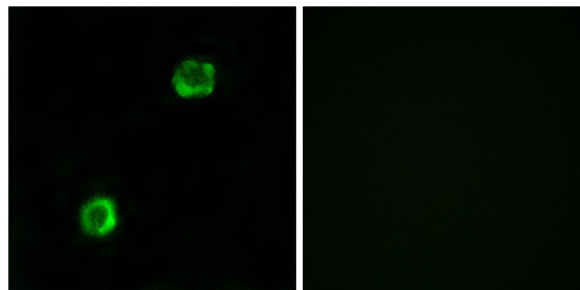
Peptide - +

Immunohistochemistry analysis of paraffin-embedded human cervix carcinoma tissue using APOL2 antibody.



Peptide - - +

Western blot analysis of extracts from COLO cells and HUVEC cells, using APOL2 antibody.



Peptide - +

Immunofluorescence analysis of MCF-7 cells, using APOL2 antibody.