



Web: www.anbobio.com
www.dijibio.com
Order: order@dijibio.com
Tel: +86 519 8805 0026

OR51E1 Antibody [#G446]

Catalog Number: G446

Concentration: 1mg/ml

Swiss-Prot No.: Q8TCB6

Other Names: Olfactory receptor 51E1; Prostate overexpressed G protein-coupled receptor; Prostate-specific G protein-coupled receptor 2; G-protein coupled receptor 164; D-GPCR; GPR164, OR51E1P, OR52A3P, POGR, PSGR2

Storage/Stability: Store at -20°C/1 year

Form of Antibody: Rabbit IgG in phosphate buffered saline (without Mg²⁺ and Ca²⁺), pH 7.4, 150mM NaCl, 0.02% sodium azide and 50% glycerol.

Immunogen: The antiserum was produced against synthesized peptide derived from internal of human OR51E1.

Purification: The antibody was affinity-purified from rabbit antiserum by affinity-chromatography using epitope-specific immunogen.

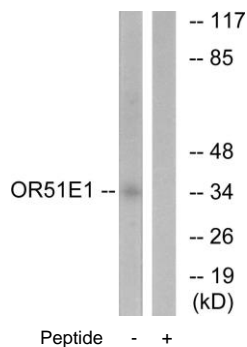
Specificity: OR51E1 antibody detects endogenous levels of total OR51E1 protein.

Reactivity: Human

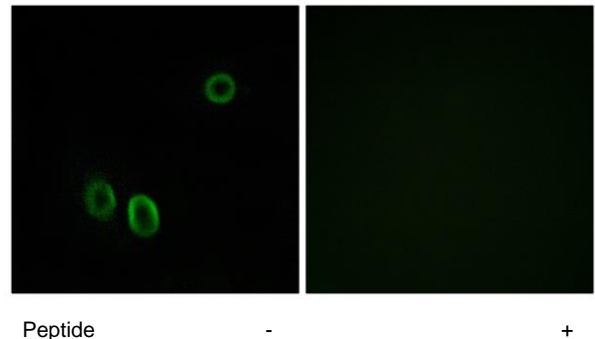
Applications: WB: 1:500~1:3000 IF: 1:100~1:500
ELISA: 1:20000

References:

Weigle B., Biochem. Biophys. Res. Commun. 322:239-249(2004).
Weng J., Int. J. Cancer 118:1471-1480(2006).
Malnic B., Proc. Natl. Acad. Sci. U.S.A. 101:2584-2589(2004).



Western blot analysis of extracts from HeLa cells, using OR51E1 antibody.



Immunofluorescence analysis of A549 cells, using OR51E1 antibody.