



Web: www.anbobio.com
www.dijibio.com
Order: order@dijibio.com
Tel: +86 519 8805 0026

OR1D2 Antibody [#G516]

Catalog Number: G516

Concentration: 1mg/ml

Swiss-Prot No.: P34982

Other Names: Olfactory receptor 1D2; Olfactory receptor OR17-6; Olfactory receptor-like protein HGMP07E; Olfactory receptor 17-4; OR17-4; OLFR1

Storage/Stability: Store at -20°C/1 year

Form of Antibody: Rabbit IgG in phosphate buffered saline (without Mg²⁺ and Ca²⁺), pH 7.4, 150mM NaCl, 0.02% sodium azide and 50% glycerol.

Immunogen: The antiserum was produced against synthesized peptide derived from internal of human OR1D2.

Purification: The antibody was affinity-purified from rabbit antiserum by affinity-chromatography using epitope-specific immunogen.

Specificity: OR1D2 antibody detects endogenous levels of total OR1D2 protein.

Reactivity: Human

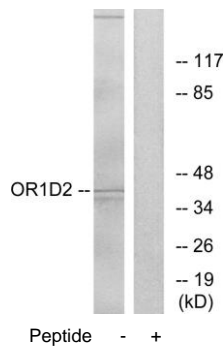
Applications: WB: 1:500~1:3000 IF: 1:100~1:500
ELISA: 1:20000

References:

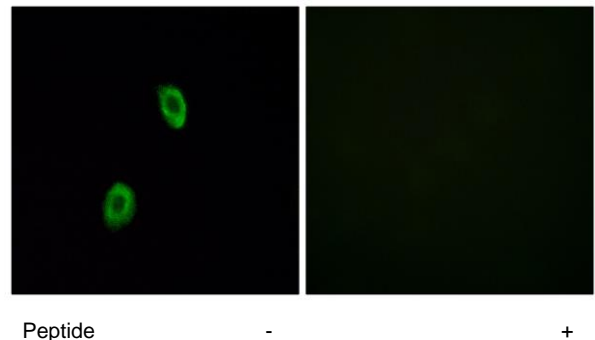
Schurmans S., Cytogenet. Cell Genet. 63:200-204(1993).

Glusman G., Genomics 63:227-245(2000).

Fuchs T., Genomics 80:295-302(2002).



Western blot analysis of extracts from Jurkat cells, using OR1D2 antibody.



Immunofluorescence analysis of HUVEC cells, using OR1D2 antibody.