



Web: www.anbobio.com
www.dijibio.com
Order: order@dijibio.com
Tel: +86 519 8805 0026

OR2B2 Antibody [#G539]

Catalog Number: G539

Concentration: 1mg/ml

Swiss-Prot No.: Q9GZK3

Other Names: Hs6M1-10; olfactory receptor 2B2; olfactory receptor 6-1; olfactory receptor family 2 subfamily B member 2; olfactory receptor family 2 subfamily B member 9; olfactory receptor OR6-2; OR2B2Q; OR2B9; OR6-1

Storage/Stability: Store at -20°C/1 year

Form of Antibody: Rabbit IgG in phosphate buffered saline (without Mg²⁺ and Ca²⁺), pH 7.4, 150mM NaCl, 0.02% sodium azide and 50% glycerol.

Immunogen: The antiserum was produced against synthesized peptide derived from internal of human

OR2B2.

Purification: The antibody was affinity-purified from rabbit antiserum by affinity-chromatography using epitope-specific immunogen.

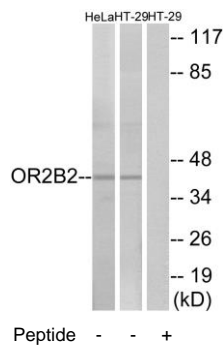
Specificity: OR2B2 antibody detects endogenous levels of total OR2B2 protein.

Reactivity: Human

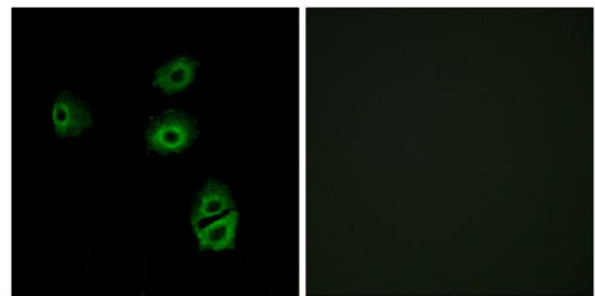
Applications: WB: 1:500~1:3000 IF: 1:100~1:500
ELISA: 1:10000

References:

Ziegler A., (In) Kasahara M. (eds.); Major histocompatibility complex-evolution, structure, and function, pp.110-130, Springer-Verlag, Tokyo (2000).
Mungall A.J., Nature 425:805-811(2003).



Western blot analysis of extracts from HeLa cells and HT-29 cells, using OR2B2 antibody.



Immunofluorescence analysis of A549 cells, using OR2B2 antibody.

Immunofluorescence analysis of A549 cells, using OR2B2 antibody.