



**Web:** [www.anbobio.com](http://www.anbobio.com)  
[www.dijibio.com](http://www.dijibio.com)  
**Order:** [order@dijibio.com](mailto:order@dijibio.com)  
**Tel:** +86 519 8805 0026

## OR2C1 Antibody [#G543]

**Catalog Number:** G543

**Concentration:** 1mg/ml

**Swiss-Prot No.:** O95371

**Other Names:** Olfactory receptor 2C1; Olfactory receptor OR16-1; OLFmf3; OR2C1; OR2C2P

**Storage/Stability:** Store at -20°C/1 year

**Form of Antibody:** Rabbit IgG in phosphate buffered saline (without Mg<sup>2+</sup> and Ca<sup>2+</sup>), pH 7.4, 150mM NaCl, 0.02% sodium azide and 50% glycerol.

**Immunogen:** The antiserum was produced against synthesized peptide derived from internal of human OR2C1.

**Purification:** The antibody was affinity-purified from

rabbit antiserum by affinity-chromatography using epitope-specific immunogen.

**Specificity:** OR2C1 antibody detects endogenous levels of total OR2C1 protein.

**Reactivity:** Human

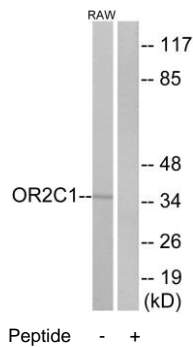
**Applications:** WB: 1:500~1:3000 IF: 1:100~1:500  
ELISA: 1:20000

**References:**

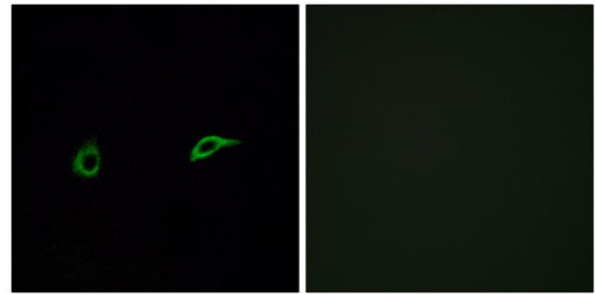
Centola M., Genome Res. 8:1172-1191(1998).

The MGC Project Team; Genome Res. 14:2121-2127(2004).

Malnic B., Proc. Natl. Acad. Sci. U.S.A. 101:2584-2589(2004).



Western blot analysis of extracts from RAW264.7 cells, using OR2C1 antibody.



Immunofluorescence analysis of A549 cells, using OR2C1 antibody.