



Web: www.anbobio.com
www.dijibio.com
Order: order@dijibio.com
Tel: +86 519 8805 0026

OR2T1 Antibody [#G565]

Catalog Number: G565

Concentration: 1mg/ml

Swiss-Prot No.: O43869

Other Names: Olfactory receptor 2T1; Olfactory receptor OR1-61; Olfactory receptor 1-25; OR1-25

Storage/Stability: Store at -20°C/1 year

Form of Antibody: Rabbit IgG in phosphate buffered saline (without Mg²⁺ and Ca²⁺), pH 7.4, 150mM NaCl, 0.02% sodium azide and 50% glycerol.

Immunogen: The antiserum was produced against synthesized peptide derived from internal of human OR2T1.

Purification: The antibody was affinity-purified from

rabbit antiserum by affinity-chromatography using epitope-specific immunogen.

Specificity: OR2T1 antibody detects endogenous levels of total OR2T1 protein.

Reactivity: Human

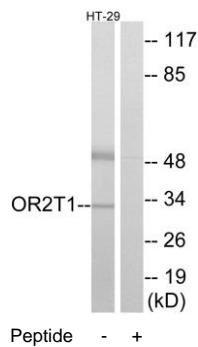
Applications: WB: 1:500~1:3000 IF: 1:100~1:500
ELISA: 1:10000

References:

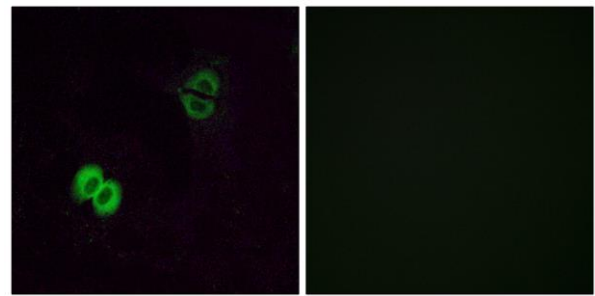
Rouquier S., Nat. Genet. 18:243-250(1998).

Fuchs T., Genomics 80:295-302(2002).

Malnic B., Proc. Natl. Acad. Sci. U.S.A. 101:2584-2589(2004).



Western blot analysis of extracts from HT-29 cells, using OR2T1 antibody.



Immunofluorescence analysis of A549 cells, using OR2T1 antibody.