



**Web:** [www.anbobio.com](http://www.anbobio.com)  
[www.dijibio.com](http://www.dijibio.com)  
**Order:** [order@dijibio.com](mailto:order@dijibio.com)  
**Tel:** +86 519 8805 0026

## OR2T2/2T35 Antibody [#G566]

**Catalog Number:** G566

**Concentration:** 1mg/ml

**Swiss-Prot No.:** Q61F00

**Other Names:** olfactory receptor 2t2; olfactory receptor or1-43; olfactory receptor, family 2, subfamily t, member 2; or1-43; or2t2; or2t2p

**Storage/Stability:** Store at -20°C/1 year

**Form of Antibody:** Rabbit IgG in phosphate buffered saline (without Mg<sup>2+</sup> and Ca<sup>2+</sup>), pH 7.4, 150mM NaCl, 0.02% sodium azide and 50% glycerol.

**Immunogen:** The antiserum was produced against synthesized peptide derived from internal of human OR2T2.

**Purification:** The antibody was affinity-purified from rabbit antiserum by affinity-chromatography using epitope-specific immunogen.

**Specificity:** OR2T2/2T35 antibody detects endogenous levels of total OR2T2 protein.

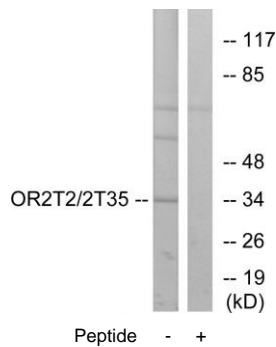
**Reactivity:** Human

**Applications:** WB: 1:500~1:3000 IF: 1:100~1:500  
ELISA: 1:10000

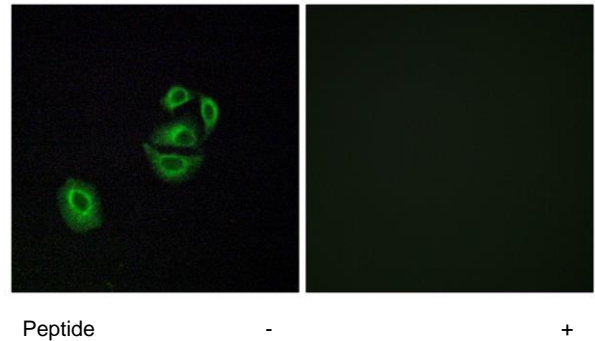
**References:**

Gregory S.G., Nature 441:315-321(2006).

Malnic B., Proc. Natl. Acad. Sci. U.S.A. 101:2584-2589(2004).



Western blot analysis of extracts from HepG2 cells, using OR2T2/2T35 antibody.



Immunofluorescence analysis of A549 cells, using OR2T2/2T35 antibody.