



Web: www.anbobio.com
www.dijibio.com
Order: order@dijibio.com
Tel: +86 519 8805 0026

OR4E2 Antibody [#G597]

Catalog Number: G597

Concentration: 1mg/ml

Swiss-Prot No.: Q8NGC2

Other Names: Olfactory receptor 4E2; Olfactory receptor OR14-42

Storage/Stability: Store at -20°C/1 year

Form of Antibody: Rabbit IgG in phosphate buffered saline (without Mg²⁺ and Ca²⁺), pH 7.4, 150mM NaCl, 0.02% sodium azide and 50% glycerol.

Immunogen: The antiserum was produced against synthesized peptide derived from internal of human OR4E2.

Purification: The antibody was affinity-purified from

rabbit antiserum by affinity-chromatography using epitope-specific immunogen.

Specificity: OR4E2 antibody detects endogenous levels of total OR4E2 protein.

Reactivity: Human (Identities = 100%, Positives = 100%)

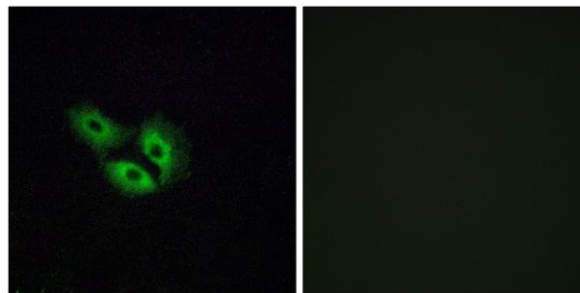
Applications: IF: 1:100~1:500 ELISA: 1:20000

References:

Suwa M., Submitted (JUL-2001) to the EMBL/GenBank/DDBJ databases.

Fuchs T., Genomics 80:295-302(2002).

Malnic B., Proc. Natl. Acad. Sci. U.S.A. 101:2584-2589(2004).



Peptide

-

+

Immunofluorescence analysis of A549 cells, using OR4E2 antibody.