



**Web:** [www.anbobio.com](http://www.anbobio.com)  
[www.dijibio.com](http://www.dijibio.com)  
**Order:** [order@dijibio.com](mailto:order@dijibio.com)  
**Tel:** (86) 519 8805 0026

## PEVR1 Antibody [#G722]

**Catalog Number:** G722

**Concentration:** 1mg/ml

**Swiss-Prot No.:** Q9HAB3

**Other Names:** G protein-coupled receptor 172A;  
G-protein coupled receptor GPCR41; GPCR; GPCR41;  
GPR172A; PAR1; PERV-A receptor 1; PEVR1; PEVR2;  
porcine endogenous retrovirus A receptor 1

**Storage/Stability:** Store at -20°C/1 year

**Form of Antibody:** Rabbit IgG in phosphate buffered saline (without Mg<sup>2+</sup> and Ca<sup>2+</sup>), pH 7.4, 150mM NaCl, 0.02% sodium azide and 50% glycerol.

**Immunogen:** The antiserum was produced against synthesized peptide derived from internal of human PEVR1.

**Purification:** The antibody was affinity-purified from rabbit antiserum by affinity-chromatography using epitope-specific immunogen.

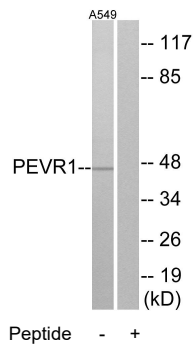
**Specificity:** PEVR1 antibody detects endogenous levels of total PEVR1 protein.

**Reactivity:** Human

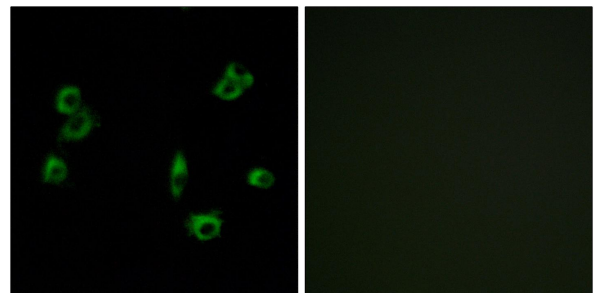
**Applications:** WB: 1:500~1:3000 IF: 1:100~1:500  
ELISA: 1:10000

**References:**

Ericsson T.A.; Proc. Natl. Acad. Sci. U.S.A. 100:6759-6764(2003).  
Ota T.; Nat. Genet. 36:40-45(2004).  
The MGC Project Team; Genome Res. 14:2121-2127(2004).



Western blot analysis of extracts from A549 cells, using PEVR1 antibody.



Immunofluorescence analysis of MCF-7 cells, using PEVR1 antibody.