



**Web:** [www.anbobio.com](http://www.anbobio.com)  
[www.dijibio.com](http://www.dijibio.com)  
**Order:** [order@dijibio.com](mailto:order@dijibio.com)  
**Tel:** +86 519 8805 0026

## OR2T11 Antibody [#G437]

**Catalog Number:** G437

**Concentration:** 1mg/ml

**Swiss-Prot No.:** Q8NH01

**Other Names:** Olfactory receptor 2T11; Olfactory receptor OR1-65

**Storage/Stability:** Store at -20°C/1 year

**Form of Antibody:** Rabbit IgG in phosphate buffered saline (without Mg<sup>2+</sup> and Ca<sup>2+</sup>), pH 7.4, 150mM NaCl, 0.02% sodium azide and 50% glycerol.

**Immunogen:** The antiserum was produced against synthesized peptide derived from internal of human OR2T11.

**Purification:** The antibody was affinity-purified from

rabbit antiserum by affinity-chromatography using epitope-specific immunogen.

**Specificity:** OR2T11 antibody detects endogenous levels of total OR2T11 protein.

**Reactivity:** Human

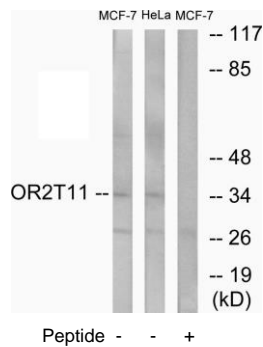
**Applications:** WB: 1:500~1:3000 IF: 1:100~1:500

ELISA: 1:1000

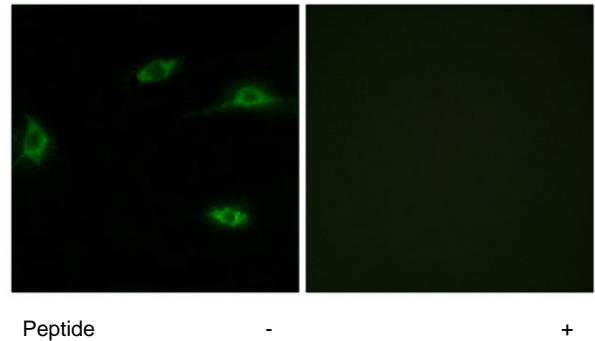
**References:**

Suwa M., Submitted (JUL-2001) to the EMBL/GenBank/DDBJ databases.

Malnic B., Proc. Natl. Acad. Sci. U.S.A. 101:2584-2589(2004).



Western blot analysis of extracts from MCF-7 cells and HeLa cells, using OR2T11 antibody.



Immunofluorescence analysis of LOVO cells, using OR2T11 antibody.