



Web: www.anbobio.com
www.dijibio.com
Order: order@dijibio.com
Tel: +86 519 8805 0026

OR2T2/2T35 Antibody [#G439]

Catalog Number: G439

Concentration: 1mg/ml

Swiss-Prot No.: Q6IF00

Other Names: olfactory receptor 2t2; olfactory receptor or1-43; olfactory receptor, family 2, subfamily t, member 2; or1-43; or2t2; or2t2p

Storage/Stability: Store at -20°C/1 year

Form of Antibody: Rabbit IgG in phosphate buffered saline (without Mg²⁺ and Ca²⁺), pH 7.4, 150mM NaCl, 0.02% sodium azide and 50% glycerol.

Immunogen: The antiserum was produced against synthesized peptide derived from internal of human OR2T2/2T35.

Purification: The antibody was affinity-purified from rabbit antiserum by affinity-chromatography using epitope-specific immunogen.

Specificity: OR2T2/2T35 antibody detects endogenous levels of total OR2T2/2T35 protein.

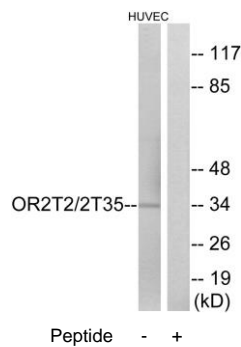
Reactivity: Human

Applications: WB: 1:500~1:3000 IF: 1:100~1:500
ELISA: 1:1000

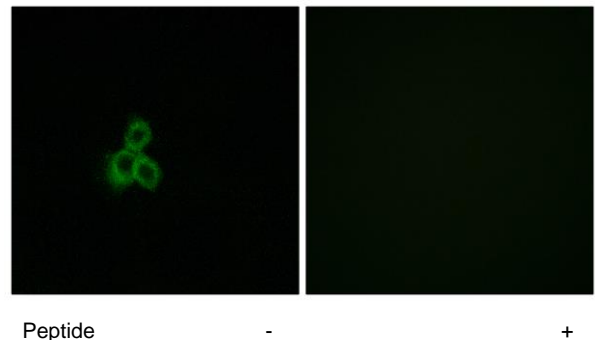
References:

Gregory S.G., Nature 441:315-321(2006).

Malnic B., Proc. Natl. Acad. Sci. U.S.A. 101:2584-2589(2004).



Western blot analysis of extracts from HUVEC cells, using OR2T2/2T35 antibody.



Immunofluorescence analysis of MCF-7 cells, using OR2T2/2T35 antibody.