



**Web:** [www.anbobio.com](http://www.anbobio.com)  
[www.dijibio.com](http://www.dijibio.com)  
**Order:** [order@dijibio.com](mailto:order@dijibio.com)  
**Tel:** (86) 519 8805 0026

## FA12 (heavy chain, Cleaved-Ile20) Antibody [#L0204]

**Catalog Number:** L0204

**Concentration:** 1mg/ml

**Swiss-Prot No.:** P00748

**Other Names:** coagulation factor XII (Hageman factor); FA12; HAE3; HAEX; HAF; Hageman factor

**Storage/Stability:** Store at -20°C/1 year

**Form of Antibody:** Rabbit IgG in phosphate buffered saline (without Mg<sup>2+</sup> and Ca<sup>2+</sup>), pH 7.4, 150mM NaCl, 0.02% sodium azide and 50% glycerol.

**Immunogen:** The antiserum was produced against synthesized peptide derived from human FA12 heavy chain.

**Purification:** The antibody was affinity-purified from

rabbit antiserum by affinity-chromatography using epitope-specific immunogen.

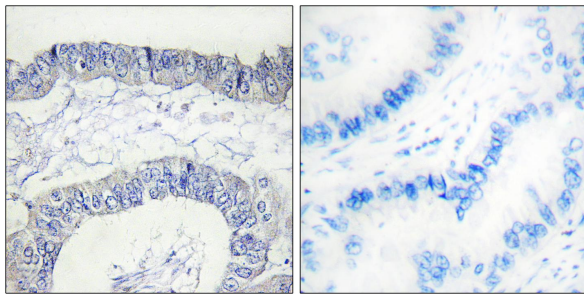
**Specificity:** FA12 (heavy chain, Cleaved-Ile20) antibody detects endogenous levels of fragment of activated FA12 heavy chain resulting from cleavage adjacent to Ile20.

**Reactivity:** Human

**Applications:** WB: 1:500~1:3000 IHC: 1:50~1:100  
ELISA: 1:20000

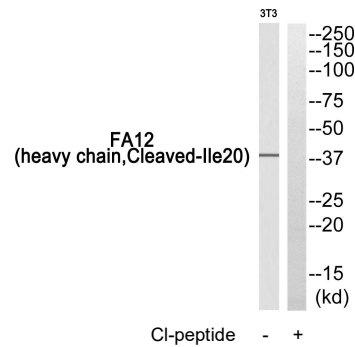
**References:**

Cool D.E., J. Biol. Chem. 262:13662-13673(1987).  
Schmutz J., Nature 431:268-274(2004).  
Triodi M., Nucleic Acids Res. 14:3146-3146(1986).



Cl-peptide - +

Immunohistochemistry analysis of paraffin-embedded human lung carcinoma tissue, using FA12 (heavy chain, Cleaved-Ile20) antibody.



Western blot analysis of extracts from 3T3 cells, using FA12 (heavy chain, Cleaved-Ile20) antibody.