



Web: www.anbobio.com

www.dijibio.com

Order: order@dijibio.com

Tel: (86) 519 8805 0026

C1R (light chain, Cleaved-Ile464) Antibody [#L0230]

Catalog Number: L0230

Concentration: 1mg/ml

Swiss-Prot No.: P00736

Other Names: Complement C1r subcomponent [Precursor], EC 3.4.21.41, Complement component 1, r subcomponent, Complement C1r subcomponent heavy chain, Complement C1r subcomponent light chain, C1R

Storage/Stability: Store at -20°C/1 year

Form of Antibody: Rabbit IgG in phosphate buffered saline (without Mg²⁺ and Ca²⁺), pH 7.4, 150mM NaCl, 0.02% sodium azide and 50% glycerol.

Immunogen: The antiserum was produced against synthesized peptide derived from human C1R.

Purification: The antibody was affinity-purified from rabbit antiserum by affinity-chromatography using epitope-specific immunogen.

Specificity: C1R (light chain, Cleaved-Ile464) antibody detects endogenous levels of fragment of activated C1R resulting from cleavage adjacent to Ile464.

Reactivity: Human

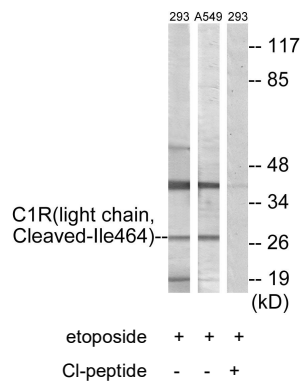
Applications: WB: 1:500~1:3000 ELISA: 1:20000

References:

Leytus S.P., Biochemistry 25:4855-4863(1986).

Journet A., Biochem. J. 240:783-787(1986).

Nakagawa M., Ann. Hum. Genet. 67:207-215(2003).



Western blot analysis of extracts from 293 cells treated with etoposide (25uM, 1hour) and A549 cells treated with etoposide (25uM, 24hours), using C1R (light chain, Cleaved-Ile464) antibody.