



**Web:** [www.anbobio.com](http://www.anbobio.com)  
[www.dijibio.com](http://www.dijibio.com)  
**Order:** [order@dijibio.com](mailto:order@dijibio.com)  
**Tel:** (86) 519 8805 0026

## Caspase 3 (Cleaved-Ser29) Antibody [#L0154]

**Catalog Number:** L0154

**Concentration:** 1mg/ml

**Swiss-Prot No.:** P42574

**Other Names:** Apopain; CASP-3; CASP3; caspase 3, apoptosis-related cysteine peptidase; caspase 3, apoptosis-related cysteine protease; Caspase-3; Caspase-3 subunit p12; Caspase-3 subunit p17; CPP-32; CPP32; CPP32B; Cysteine protease CPP32; PARP cleavage protease; procaspase3; Protein Yama; SCA-1; SREBP cleavage activity 1; Yama

**Storage/Stability:** Store at -20°C/1 year

**Form of Antibody:** Rabbit IgG in phosphate buffered saline (without Mg<sup>2+</sup> and Ca<sup>2+</sup>), pH 7.4, 150mM NaCl, 0.02% sodium azide and 50% glycerol.

**Immunogen:** The antiserum was produced against

synthesized peptide derived from human CASP3.

**Purification:** The antibody was affinity-purified from rabbit antiserum by affinity-chromatography using epitope-specific immunogen.

**Specificity:** Caspase 3 (Cleaved-Ser29) antibody detects endogenous levels of fragment of activated CASP3 resulting from cleavage adjacent to Ser29.

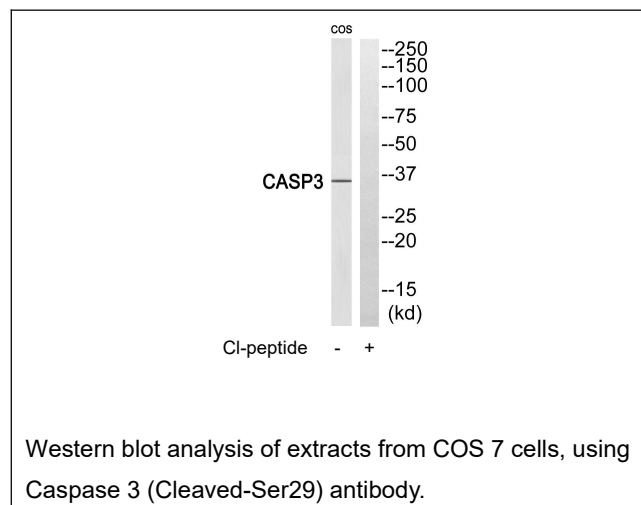
**Reactivity:** Human

**Applications:** WB: 1:500~1:3000 ELISA: 1:40000

**References:**

Fernandes-Alnemri T., J. Biol. Chem. 269:30761-30764(1994).

Tewari M., Cell 81:801-809(1995).



**For Research Use Only**