



Web: www.anbobio.com
www.dijibio.com
Order: order@dijibio.com
Tel: (86) 519 8805 0026

Caspase 7 (p11, Cleaved-Ala207) Antibody [#L0164]

Catalog Number: L0164

Concentration: 1mg/ml

Swiss-Prot No.: P55210

Other Names: Apoptotic protease Mch-3; CASP-7; CASP7; caspase 7 isoform delta; caspase 7, apoptosis-related cysteine peptidase; caspase 7, apoptosis-related cysteine protease; Caspase-7; Caspase-7 subunit p11; Caspase-7 subunit p20; CMH-1; ICE-LAP3; ICE-like apoptotic protease 3; Lice2 alpha/beta/gamma; MCH3

Storage/Stability: Store at -20°C/1 year

Form of Antibody: Rabbit IgG in phosphate buffered saline (without Mg²⁺ and Ca²⁺), pH 7.4, 150mM NaCl, 0.02% sodium azide and 50% glycerol.

Immunogen: The antiserum was produced against synthesized peptide derived from human CASP7.

Purification: The antibody was affinity-purified from rabbit antiserum by affinity-chromatography using epitope-specific immunogen.

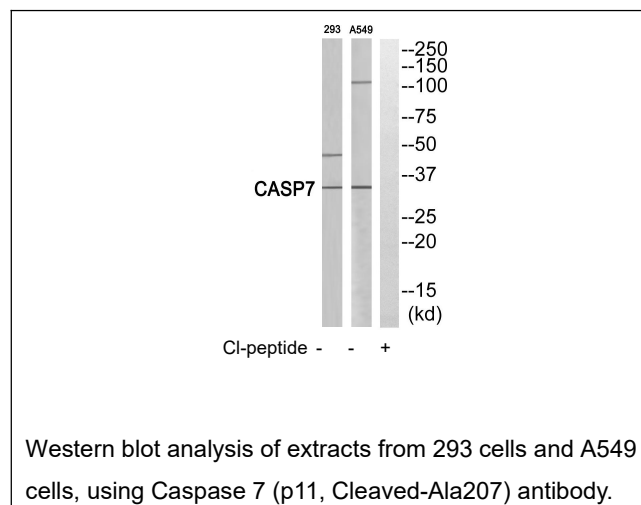
Specificity: Caspase 7 (p11, Cleaved-Ala207) antibody detects endogenous levels of fragment of activated CASP7 resulting from cleavage adjacent to Ala207.

Reactivity: Human

Applications: WB: 1:500~1:3000 ELISA: 1:40000

References:

Fernandes-Alnemri T., Cancer Res. 55:6045-6052(1995).
Duan H., J. Biol. Chem. 271:1621-1625(1996).



For Research Use Only