



**Web:** [www.anbobio.com](http://www.anbobio.com)  
[www.dijibio.com](http://www.dijibio.com)  
**Order:** [order@dijibio.com](mailto:order@dijibio.com)  
**Tel:** (86) 519 8805 0026

## CASP8 (Cleaved-Asp384) Antibody [#L0167]

**Catalog Number:** L0167

**Concentration:** 1mg/ml

**Swiss-Prot No.:** Q14790

**Other Names:** EC 3.4.22.61, CASP-8, ICE-like apoptotic protease 5, MORT1-associated CED-3 homolog, MACH, FADD-homologous ICE/CED-3-like protease, FADD-like ICE, FLICE, Apoptotic cysteine protease, Apoptotic protease Mch-5, CAP4, Caspase-8 subunit p18, Caspase-8 subunit p10, CASP8, MCH5, Caspase-8 [Precursor]

**Storage/Stability:** Store at -20°C/1 year

**Form of Antibody:** Rabbit IgG in phosphate buffered saline (without Mg<sup>2+</sup> and Ca<sup>2+</sup>), pH 7.4, 150mM NaCl, 0.02% sodium azide and 50% glycerol.

**Immunogen:** The antiserum was produced against

synthesized peptide derived from human CASP8.

**Purification:** The antibody was affinity-purified from rabbit antiserum by affinity-chromatography using epitope-specific immunogen.

**Specificity:** CASP8 (Cleaved-Asp384) antibody detects endogenous levels of fragment of activated CASP8 resulting from cleavage adjacent to Asp384.

**Reactivity:** Human

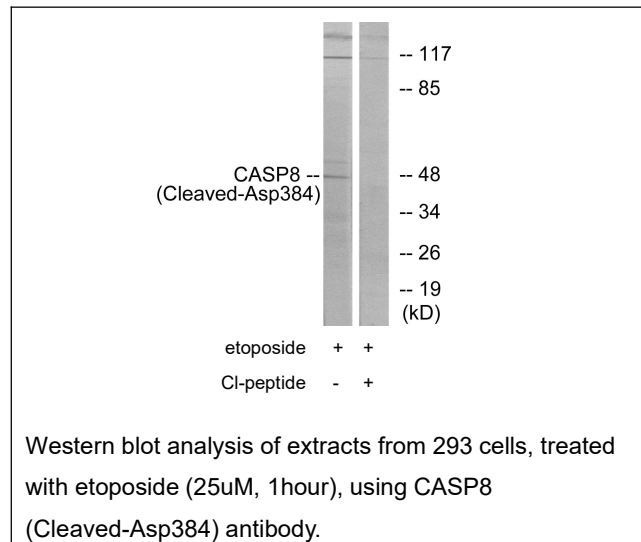
**Applications:** WB: 1:500~1:3000 ELISA: 1:40000

**References:**

Boldin M.P., Cell 85:803-815(1996).

Muzio M., Cell 85:817-827(1996).

Fernandes-Alnemri T., Proc. Natl. Acad. Sci. U.S.A. 93:7464-7469(1996).



**For Research Use Only**