



Web: www.anbobio.com
www.dijibio.com
Order: order@dijibio.com
Tel: (86) 519 8805 0026

MRC2 Antibody [#C11813]

Catalog Number: C11813

Concentration: 1mg/ml

Swiss-Prot No.: Q9UBG0

Other Names: Macrophage mannose receptor 2 [Precursor], Urokinase receptor-associated protein, Endocytic receptor 180, CD280 antigen, MRC2, ENDO180, KIAA0709, UPARAP

Storage/Stability: Store at -20°C/1 year

Form of Antibody: Rabbit IgG in phosphate buffered saline (without Mg²⁺ and Ca²⁺), pH 7.4, 150mM NaCl, 0.02% sodium azide and 50% glycerol.

Immunogen: The antiserum was produced against synthesized peptide derived from internal of human

MRC2.

Purification: The antibody was affinity-purified from rabbit antiserum by affinity-chromatography using epitope-specific immunogen.

Specificity: MRC2 antibody detects endogenous levels of total MRC2 protein.

Reactivity: Human, Mouse, Rat

Applications: WB: 1:500~1:3000 IHC: 1:50~1:100

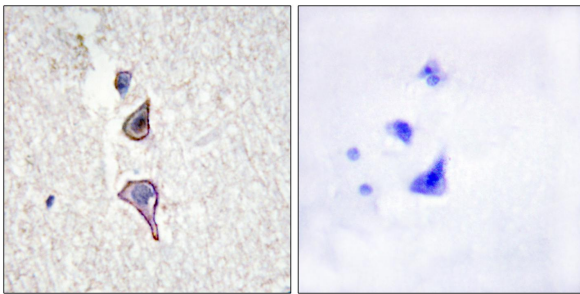
IF: 1:100~1:500 ELISA: 1:20000

References:

Behrendt N., J. Biol. Chem. 275:1993-2002(2000).

Sheikh H., J. Cell Sci. 113:1021-1032(2000).

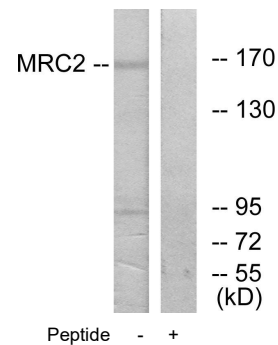
Howard M.J., J. Biol. Chem. 277:32320-32331(2002).



Peptide -

+

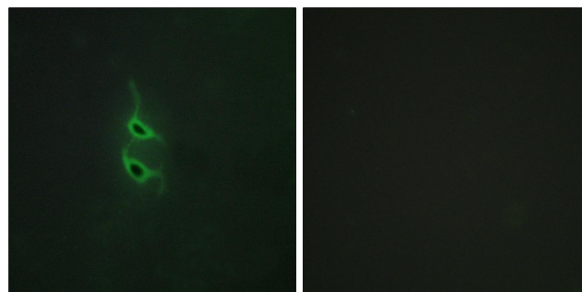
Immunohistochemistry analysis of paraffin-embedded human brain tissue using MRC2 antibody.



MRC2 -- -- 170
-- 130
-- 95
-- 72
-- 55
(kD)

Peptide - +

Western blot analysis of extracts from 293 cells, using MRC2 antibody.



Peptide -

+

Immunofluorescence analysis of HepG2 cells, using MRC2 antibody.