



**Web:** [www.anbobio.com](http://www.anbobio.com)  
[www.dijibio.com](http://www.dijibio.com)  
**Order:** [order@dijibio.com](mailto:order@dijibio.com)  
**Tel:** (86) 519 8805 0026

## EPHA6 Antibody [#C11829]

**Catalog Number:** C11829

**Concentration:** 1mg/ml

**Swiss-Prot No.:** Q9UF33

**Other Names:** Ephrin type-A receptor 6 [Precursor], EC 2.7.10.1, Tyrosine-protein kinase receptor EHK-2, EPH homology kinase 2, EPHA6, EHK2

**Storage/Stability:** Store at -20°C/1 year

**Form of Antibody:** Rabbit IgG in phosphate buffered saline (without Mg<sup>2+</sup> and Ca<sup>2+</sup>), pH 7.4, 150mM NaCl, 0.02% sodium azide and 50% glycerol.

**Immunogen:** The antiserum was produced against synthesized peptide derived from internal of human EPHA6.

**Purification:** The antibody was affinity-purified from

rabbit antiserum by affinity-chromatography using epitope-specific immunogen.

**Specificity:** EPHA6 antibody detects endogenous levels of total EPHA6 protein.

**Reactivity:** Human (Identities = 100%, Positives = 100%);  
Mouse (Identities = 100%, Positives = 100%);  
Rat (Identities = 100%, Positives = 100%)

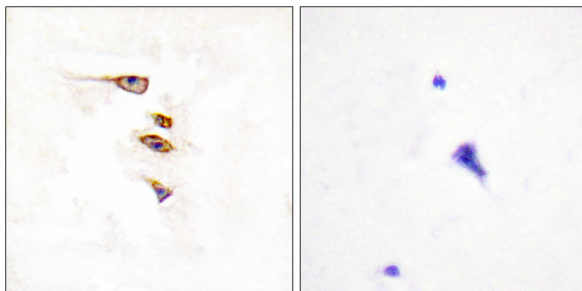
**Applications:** IHC: 1:50~1:100 IF: 1:100~1:500  
ELISA: 1:20000

**References:**

The German cDNA consortium; Submitted (JAN-2005) to the EMBL/GenBank/DDBJ databases.

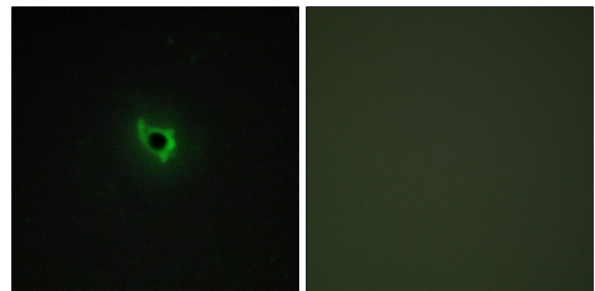
Muzny D.M., Nature 440:1194-1198(2006).

Hafner C., Clin. Chem. 50:490-499(2004).



Peptide - +

Immunohistochemistry analysis of paraffin-embedded human brain tissue, using EPHA6 antibody.



Peptide - +

Immunofluorescence analysis of COS-7 cells, using EPHA6 antibody.