



Web: www.anbobio.com
www.dijibio.com
Order: order@dijibio.com
Tel: (86) 519 8805 0026

ARMX3 Antibody [#C11839]

Catalog Number: C11839

Concentration: 1mg/ml

Swiss-Prot No.: Q9UH62

Other Names: ALEX3, DKFZp781N1954, KIAA0443, MGC12199, dJ545K15.2

Storage/Stability: Store at -20°C/1 year

Form of Antibody: Rabbit IgG in phosphate buffered saline (without Mg²⁺ and Ca²⁺), pH 7.4, 150mM NaCl, 0.02% sodium azide and 50% glycerol.

Immunogen: The antiserum was produced against synthesized peptide derived from internal of human ARMX3.

Purification: The antibody was affinity-purified from

rabbit antiserum by affinity-chromatography using epitope-specific immunogen.

Specificity: ARMX3 antibody detects endogenous levels of total ARMX3 protein.

Reactivity: Human, Mouse, Rat

Applications: WB: 1:500~1:3000 IHC: 1:50~1:100

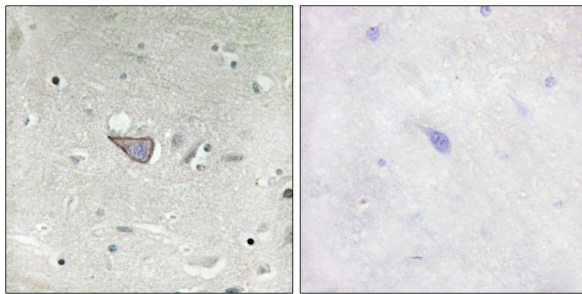
IF: 1:00~1:500 ELISA: 1:1000

References:

Kurochkin I.V., Biochem. Biophys. Res. Commun. 280:340-347(2001).

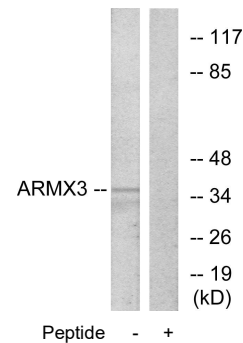
Zhang Q.-H., Genome Res. 10:1546-1560(2000).

Clark H.F., Genome Res. 13:2265-2270(2003).

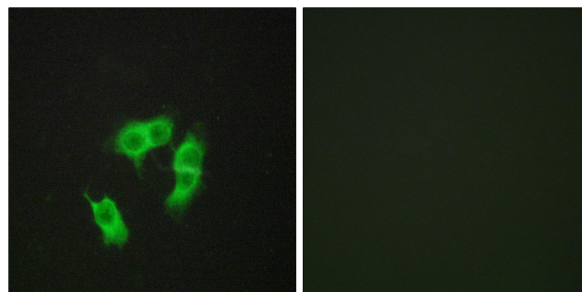


Peptide - +

Immunohistochemistry analysis of paraffin-embedded human brain tissue using ARMX3 antibody.



Western blot analysis of extracts from K562 cells, using ARMX3 antibody.



Peptide - +

Immunofluorescence analysis of HepG2 cells, using ARMX3 antibody.