



Web: www.anbobio.com
www.dijibio.com
Order: order@dijibio.com
Tel: (86) 519 8805 0026

KLHL3 Antibody [#C11840]

Catalog Number: C11840

Concentration: 1mg/ml

Swiss-Prot No.: Q9UH77/Q8N4I8

Other Names: Kelch-like protein 3; KIAA1129

Storage/Stability: Store at -20°C/1 year

Form of Antibody: Rabbit IgG in phosphate buffered saline (without Mg²⁺ and Ca²⁺), pH 7.4, 150mM NaCl, 0.02% sodium azide and 50% glycerol.

Immunogen: The antiserum was produced against synthesized peptide derived from N-terminal of human KLHL3.

Purification: The antibody was affinity-purified from

rabbit antiserum by affinity-chromatography using epitope-specific immunogen.

Specificity: KLHL3 antibody detects endogenous levels of total KLHL3 protein.

Reactivity: Human (Identities = 100%, Positives = 100%)

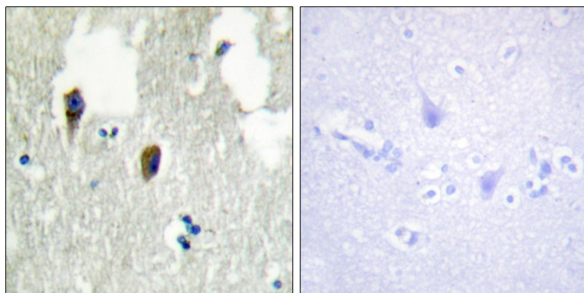
Applications: WB: 1:500~1:3000 IHC: 1:50~1:100
IF: 1:100~1:500 ELISA: 1:20000

References:

Lai F., Genomics 66:65-75(2000).

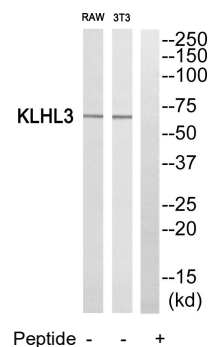
Hirosawa M., DNA Res. 6:329-336(1999).

Ota T., Nat. Genet. 36:40-45(2004).

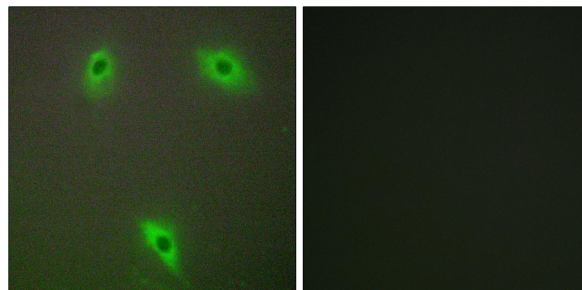


Peptide - +

Immunohistochemistry analysis of paraffin-embedded human brain tissue, using KLHL3 antibody.



Western blot analysis of extracts from RAW264.7 cells and 3T3 cells, using KLHL3 antibody.



Peptide - +

Immunofluorescence analysis of A549 cells, using KLHL3 antibody.