



Web: www.anbobio.com
www.dijibio.com
Order: order@dijibio.com
Tel: (86) 519 8805 0026

MED13 Antibody [#C11850]

Catalog Number: C11850

Concentration: 1mg/ml

Swiss-Prot No.: Q9UHV7

Other Names: ARC250, Activator-recruited cofactor 250 kDa component, KIAA0593, T240, THRAP1, TR240, Thyroid hormone receptor associated protein 1, Thyroid hormone receptor-associated protein complex 240 kDa component

Storage/Stability: Store at -20°C/1 year

Form of Antibody: Rabbit IgG in phosphate buffered saline (without Mg²⁺ and Ca²⁺), pH 7.4, 150mM NaCl, 0.02% sodium azide and 50% glycerol.

Immunogen: The antiserum was produced against synthesized peptide derived from internal of human

MED13.

Purification: The antibody was affinity-purified from rabbit antiserum by affinity-chromatography using epitope-specific immunogen.

Specificity: MED13 antibody detects endogenous levels of total MED13 protein.

Reactivity: Human (Identities = 100%, Positives = 100%)

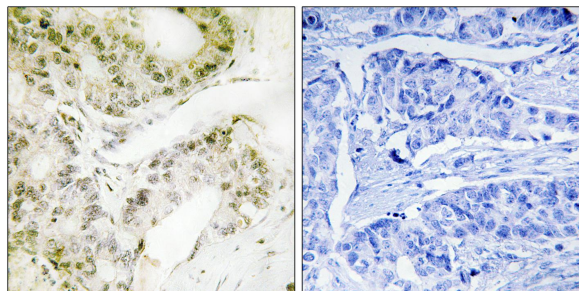
Applications: IHC: 1:50~1:100 ELISA: 1:40000

References:

Olsen J.V., Cell 127:635-648(2006).

Beausoleil S.A., Proc. Natl. Acad. Sci. U.S.A. 101:12130-12135(2004).

Naeaeer A.M., Nature 398:828-832(1999).



Peptide

-

+

Immunohistochemistry analysis of paraffin-embedded human lung carcinoma tissue, using MED13 antibody.