



**Web:** [www.anbobio.com](http://www.anbobio.com)  
[www.dijibio.com](http://www.dijibio.com)  
**Order:** [order@dijibio.com](mailto:order@dijibio.com)  
**Tel:** (86) 519 8805 0026

## PAR1 (Cleaved-Ser42) Antibody [#L0374]

**Catalog Number:** L0374

**Concentration:** 1mg/ml

**Swiss-Prot No.:** P25116

**Other Names:** CF2R; Coagulation factor II receptor; F2R; PAR-1; Proteinase activated receptor 1 precursor; Thrombin receptor; TR

**Storage/Stability:** Store at -20°C/1 year

**Form of Antibody:** Rabbit IgG in phosphate buffered saline (without Mg<sup>2+</sup> and Ca<sup>2+</sup>), pH 7.4, 150mM NaCl, 0.02% sodium azide and 50% glycerol.

**Immunogen:** The antiserum was produced against synthesized peptide derived from human PAR1.

**Purification:** The antibody was affinity-purified from rabbit antiserum by affinity-chromatography using epitope-specific immunogen.

**Specificity:** PAR1 (Cleaved-Ser42) antibody detects endogenous levels of fragment of activated PAR1 resulting from cleavage adjacent to Ser42.

**Reactivity:** Human

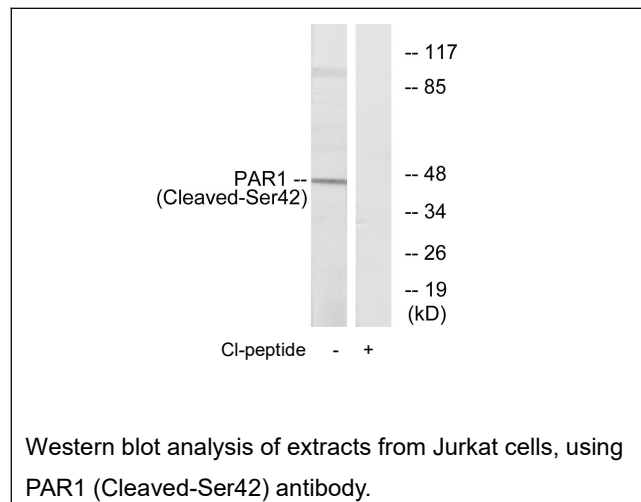
**Applications:** WB: 1:500~1:3000 ELISA: 1:20000

**References:**

Vu T.-K.H., Cell 64:1057-1068(1991).

Kahn M.L., J. Clin. Invest. 103:879-887(1999).

Cargill M., Nat. Genet. 22:231-238(1999).



**For Research Use Only**