



Web: www.anbobio.com
www.dijibio.com
Order: order@dijibio.com
Tel: (86) 519 8805 0026

S6K- α 6 Antibody [#C11866]

Catalog Number: C11866

Concentration: 1mg/ml

Swiss-Prot No.: Q9UK32

Other Names: 90 kDa ribosomal protein S6 kinase 6, EC 2.7.1.37, EC 2.7.11.1, KS6A6, RPS6KA6, RSK-4, Ribosomal S6 kinase 4, Ribosomal protein S6 kinase alpha 6, S6K-alpha 6, p90-RSK 6, pp90RSK4

Storage/Stability: Store at -20°C/1 year

Form of Antibody: Rabbit IgG in phosphate buffered saline (without Mg²⁺ and Ca²⁺), pH 7.4, 150mM NaCl, 0.02% sodium azide and 50% glycerol.

Immunogen: The antiserum was produced against synthesized peptide derived from internal of human S6K- α 6.

Purification: The antibody was affinity-purified from rabbit antiserum by affinity-chromatography using epitope-specific immunogen.

Specificity: S6K- α 6 antibody detects endogenous levels of total S6K- α 6 protein.

Reactivity: Human

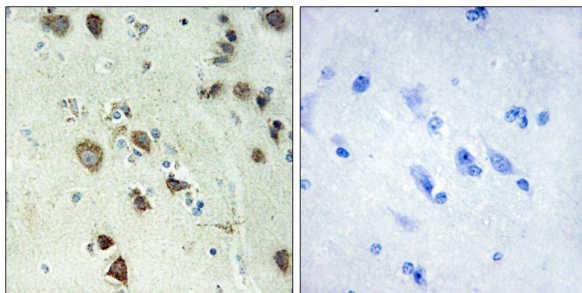
Applications: WB: 1:500~1:3000 IHC: 1:50~1:100
ELISA: 1:10000

References:

Ross M.T., Nature 434:325-337(2005).

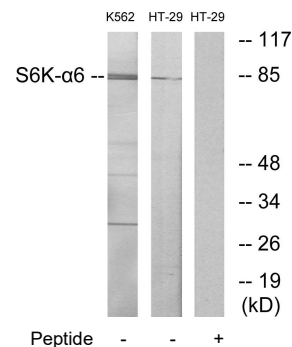
Ebert L., Submitted (JUN-2004) to the EMBL/GenBank/DDBJ databases.

Yntema H.G., Genomics 62:332-343(1999).



Peptide - +

Immunohistochemistry analysis of paraffin-embedded human brain tissue, using S6K- α 6 antibody.



Peptide - - +

Western blot analysis of extracts from K562 cells and HT-29 cells, using S6K- α 6 antibody.

For Research Use Only