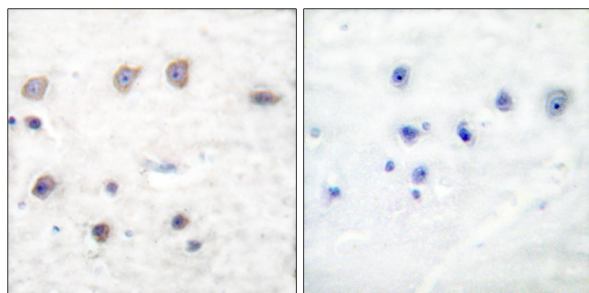




**Web:** [www.anbobio.com](http://www.anbobio.com)  
[www.dijibio.com](http://www.dijibio.com)  
**Order:** [order@dijibio.com](mailto:order@dijibio.com)  
**Tel:** (86) 519 8805 0026

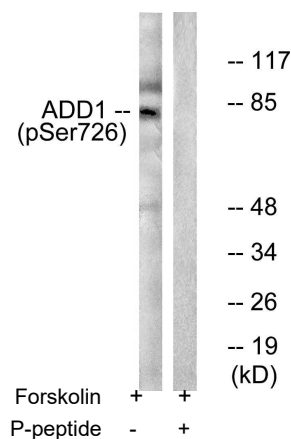
## ADD1 (Phospho-Ser726) Antibody [#A0002]

- Catalog Number:** A0002-1, A0002-2, A0002  
**Amount:** 50µg/50µl, 100µg/100µl, 200µg/200µl  
**Swiss-Prot No. :** P35611  
**All Names:** ADDA, Alpha adducin, Erythrocyte adducin alpha subunit  
**All Sites:** Human: Ser726; Mouse: Ser724; Rat: Ser724  
**Form of Antibody:** Rabbit IgG in phosphate buffered saline (without Mg<sup>2+</sup> and Ca<sup>2+</sup>), pH 7.4, 150mM NaCl, 0.02% sodium azide and 50% glycerol.  
**Storage/Stability:** Store at -20°C/1 year  
**Immunogen:** The antiserum was produced against synthesized phosphopeptide derived from human ADD1 around the phosphorylation site of serine 726 (T-P-S<sup>P</sup>-F-L).  
**Purification:** The antibody was affinity-purified from rabbit antiserum by affinity-chromatography using epitope-specific phosphopeptide. The antibody against non-phosphopeptide was removed by chromatography using non-phosphopeptide corresponding to the phosphorylation site.  
**Specificity/Sensitivity:** ADD1 (phospho-Ser726) antibody detects endogenous levels of ADD1 only when phosphorylated at serine 726.  
**Reactivity:** Human, Mouse, Rat  
**Applications:** WB: 1:500~3000 IHC: 1:50~100  
IF: 1:100~1:500 ELISA: 1:40000  
**References:** Yun Sok Lee, Mol. Cell. Biol., Jan 2007; 27: 438 - 452.  
Kang Ho Kim, J. Biol. Chem., Dec 2004; 279: 51999 - 52006.  
Marc Foretz, Mol. Cell. Biol., May 1999; 19: 3760 - 3768.  
Jae Bum Kim, J. Clin. Invest., Jan 1998; 101: 1.



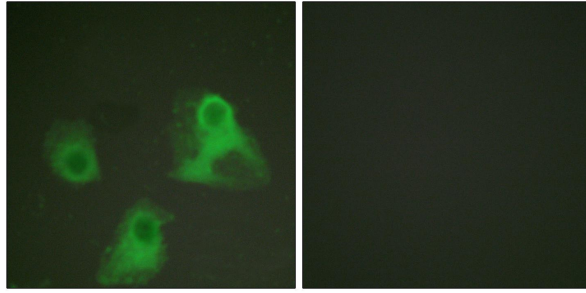
P-peptide - +

Immunohistochemical analysis of paraffin-embedded human brain tissue, using ADD1 (phospho-Ser726) antibody (#A0002).



Western blot analysis of extracts from HeLa cells treated with Forskolin (40nM, 30mins), using ADD1 (phospho-Ser726) antibody (#A0002).

**For Research Use Only**



P-peptide                      -                      +

Immunofluorescence analysis of HeLa cells, using ADD1 (phospho-Ser726) antibody (#A0002).